

SECOND AMENDMENT OF LOT "A" OF FLORENTINE VILLAS SUBDIVISION

LOCATED IN THE SOUTHWEST 1/4 OF SECTION 7
 TOWNSHIP 2 NORTH, RANGE 1 EAST, SALT LAKE BASE AND MERIDIAN
 CENTERVILLE CITY, DAVIS COUNTY, UTAH
 PART OF LOT 3, BLOCK 21, BIG CREEK PLAT, CENTERVILLE TOWNSITE PLAT

PREFIX
02-202

LAST #
0004

N

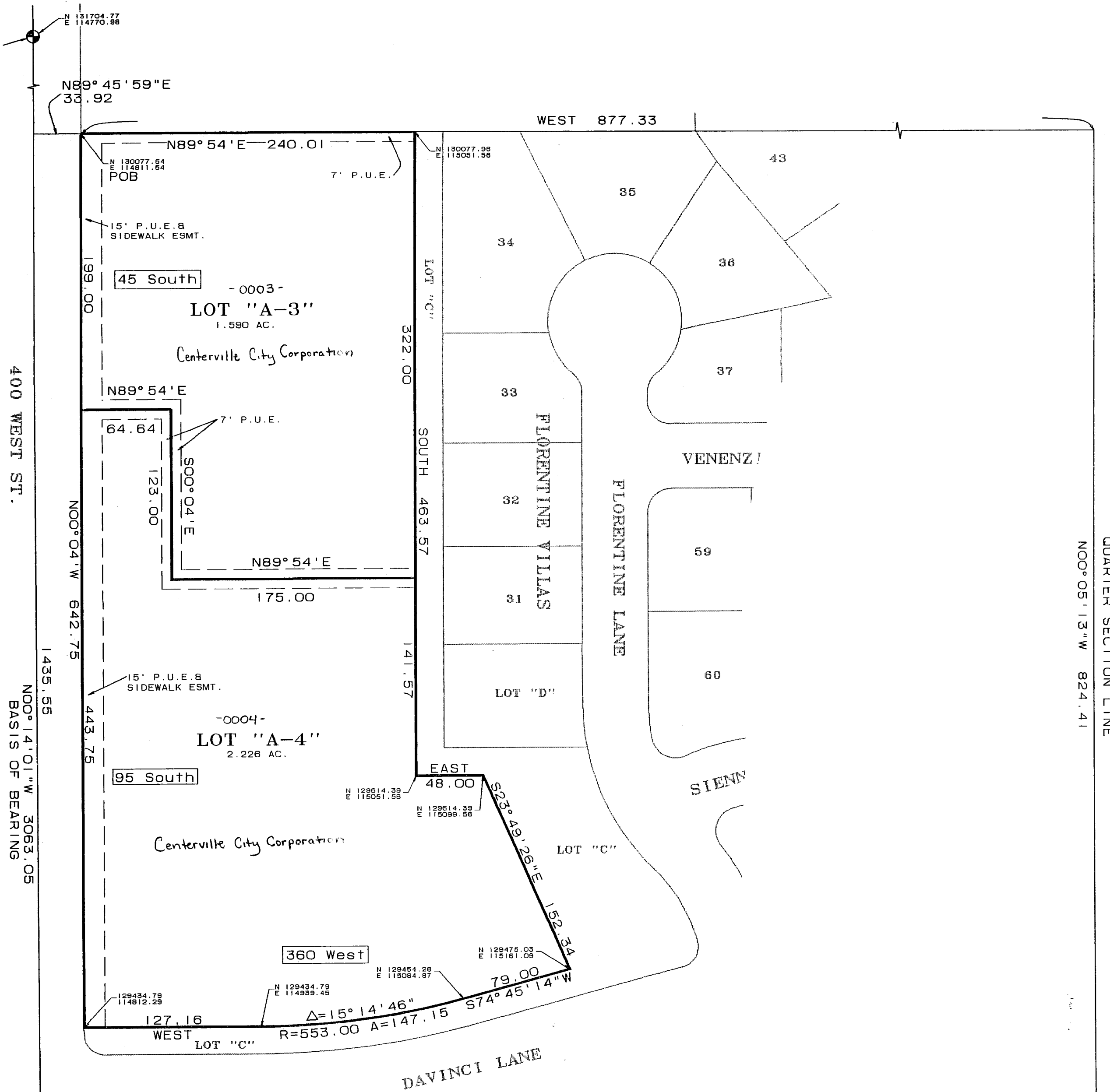


SCALE:
1" = 60'

DEVELOPMENT: SECOND AMENDMENT OF LOT "A" OF FLORENTINE VILLAS
 CITY: CENTERVILLE LOTS: A-3 THRU A-4

SW 1/4 SEC. 7 T.2N, R.1E
 LOT 3, BLK 21, BIG CREEK, CTS
 S.L.M. DAVIS COUNTY, UTAH

FILE # 4189
 R 02-17-05



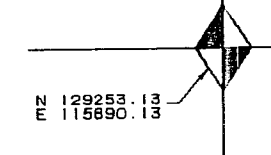
400 WEST ST.
 BASIS OF BEARING
 N00°04'11"W 642.75
 N00°14'01"W 3063.05
 1435.55

QUARTER SECTION LINE
 N00°05'13"W 824.41

PREPARED BY

ESI ENGINEERING, INC.
 3500 SOUTH MAIN STREET
 SUITE 206
 SALT LAKE CITY, UTAH 84115
 (801)263-1752

SOUTH 1/4 CORNER SECTION 7
 T.2 N., R.1 E., S.L.B. & M.
 DAVIS COUNTY STD. BRASS
 CAP MONUMENT



207

20