

180 SOUTH STREET,
160 WEST STREET &
URBAN TRAIL DEDICATION

LOCATED IN THE W 1/2 SE 1/4 AND THE E 1/2 SW 1/4
OF SECTION 7, T.2 N., R.1 E. SALT LAKE BASE AND MERIDIAN
PART OF COMMON AREA CEDAR SPRINGS CONDOMINIUMS
Centerville City, Davis County, Utah

PREFIX
02-199

LAST #
0001

N

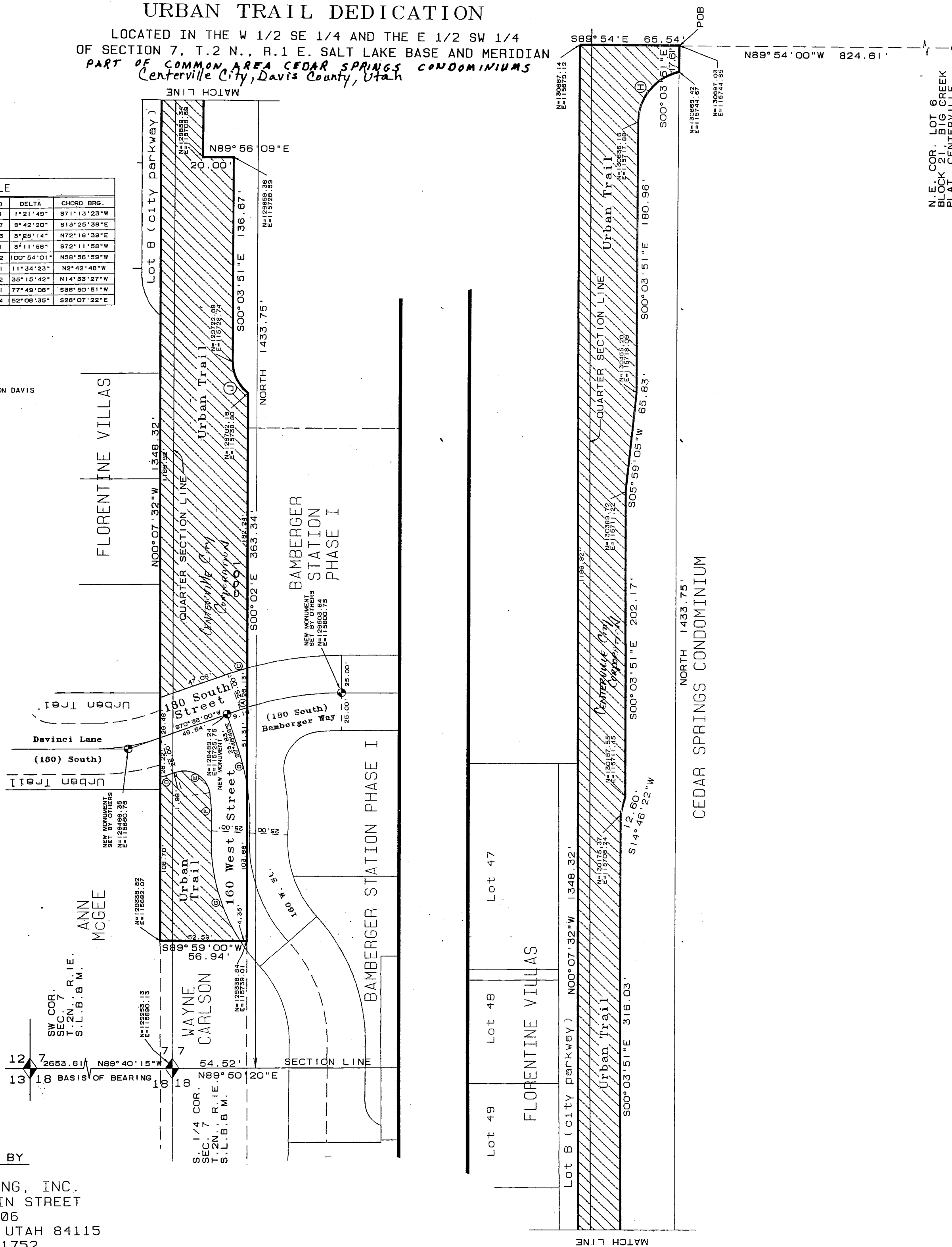


SCALE:
1" = 50'

CURVE TABLE						
CURVE	RADIUS	LENGTH	TANGENT	CHORD	DELTA	CHORD BRG.
(A)	200.00	4.78	2.38	4.76	1°21'49"	S71°13'23"W
(B)	150.00	22.79	11.42	22.77	8°42'20"	S13°25'39"E
(C)	225.00	13.43	6.72	13.43	3°25'14"	N72°18'39"E
(D)	155.50	8.68	4.34	8.68	3°11'58"	S72°11'58"W
(E)	17.00	29.94	20.59	26.22	100°54'01"	N58°56'59"W
(F)	125.00	25.25	12.67	25.21	11°34'23"	N2°42'48"W
(G)	125.00	78.93	39.73	75.72	35°15'42"	N14°33'27"W
(H)	34.00	46.18	27.44	42.71	77°49'08"	S38°50'51"W
(I)	26.00	23.65	12.71	22.84	52°06'35"	S28°07'22"E

NOTES:

ALL COORDINATES SHOWN ARE BASED ON DAVIS
COUNTY SURVEYOR'S OFFICE DATUM



PREPARED BY

ESI ENGINEERING, INC.
3500 SOUTH MAIN STREET
SUITE 206
SALT LAKE CITY, UTAH 84115
(801)263-1752

DEVELOPMENT: URBAN TRAIL DEDICATION, 180 SO. ST., 160 W. ST.

CITY: CENTERVILLE LOTS:

PT. COMMON AREA, CEDAR SPRINGS CONDOS
S 1/2 SEC. 7, T.2N, R. 1E
S.L.M. DAVIS COUNTY, UTAH

FILE # 4042
R 06-07-04