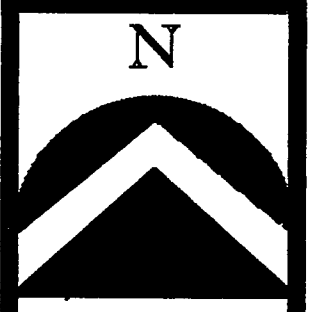


AMENDED LOT "A" OF FLORENTINE VILLAS SUBDIVISION

LOCATED IN THE SOUTHWEST 1/4 OF SECTION 7
TOWNSHIP 2 NORTH, RANGE 1 EAST, SALT LAKE BASE AND MERIDIAN
CENTERVILLE CITY, DAVIS COUNTY, UTAH

CENTERVILLE CITY CORPORATION
OWNS ALL LOTS NOT MARKED

PREFIX
02-198
5
LAST #
0002



SCALE:
1" = 100'

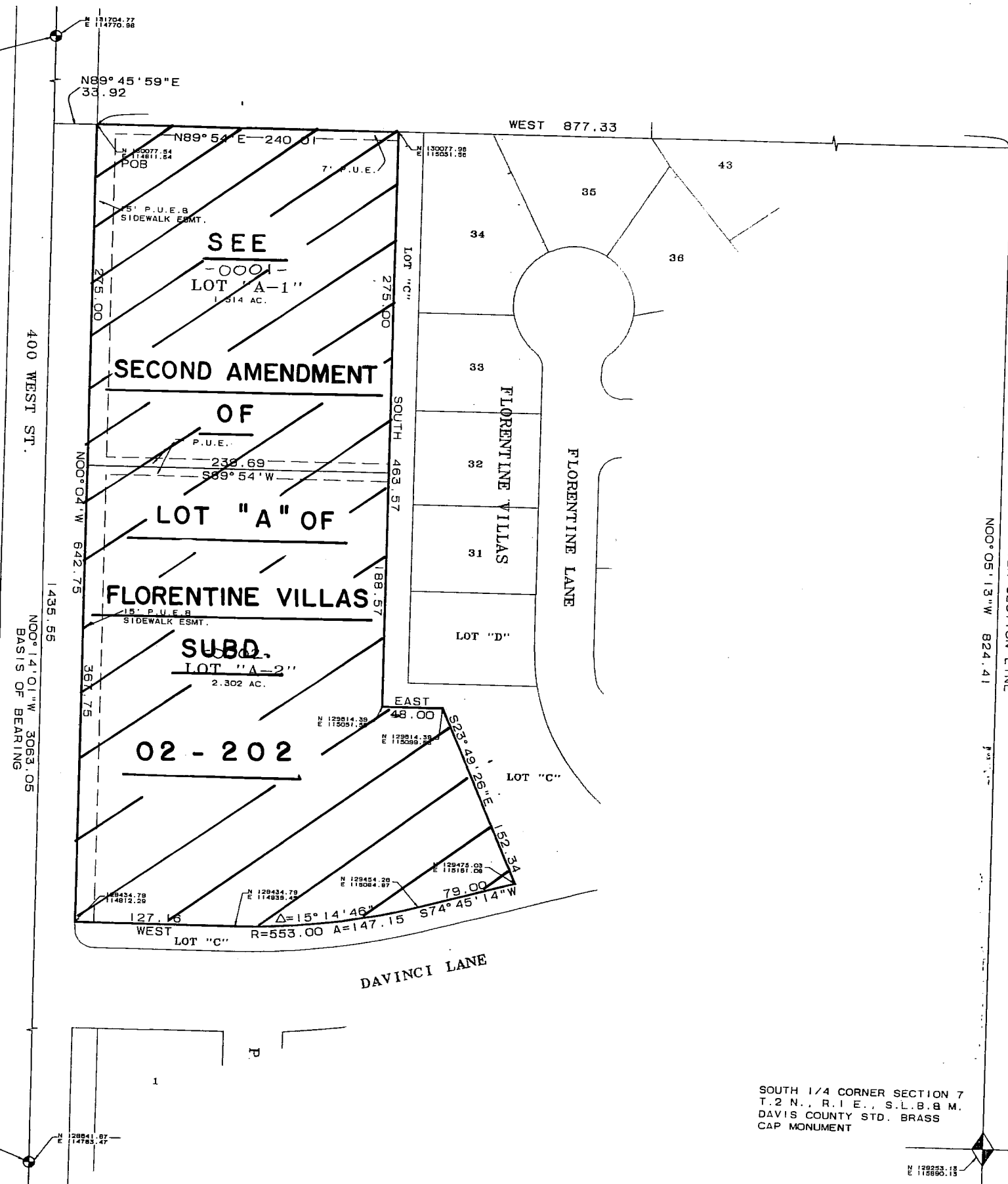
DEVELOPMENT: AMENDED LOT "A" OF FLORENTINE VILLAS
CITY: CENTERVILLE LOTS: "A-1" THRU "A-2"

CENTERVILLE CITY BRASS CAP MONUMENT
AT INTERSECTION OF 400 WEST AND
PARISH LANE
(NOT ON CENTERLINE OF 400 WEST ST.)

NOTES:
1. ALL COORDINATES SHOWN ARE BASED ON DAVIS
COUNTY SURVEYOR'S OFFICE DATUM

CENTERVILLE CITY BRASS CAP MONUMENT
AT INTERSECTION OF 400 WEST AND
PORTER LANE
(NOT ON CENTERLINE OF 400 WEST ST.)

SOUTH 1/4 CORNER SECTION 7
T. 2 N., R. 1 E., S.L.B.M.
DAVIS COUNTY STD. BRASS
CAP MONUMENT



198

20

PREPARED BY

ESI ENGINEERING, INC.
3500 SOUTH MAIN STREET
SUITE 206
SALT LAKE CITY, UTAH 84115
(801) 263-1752

SW 1/4 SEC. 7, T. 2N., R. 1E
S.L.M. DAVIS COUNTY, UTAH

FILE # 4041
R 06-07-04