

ROCKWOOD FARMS SUBDIVISION PHASE 4

A SUBDIVISION LOCATED IN THE NORTHWEST QUARTER OF SECTION 8,
TOWNSHIP 2 NORTH, RANGE 1 EAST,
SALT LAKE BASE AND MERIDIAN
CENTERVILLE CITY, DAVIS COUNTY, UTAH

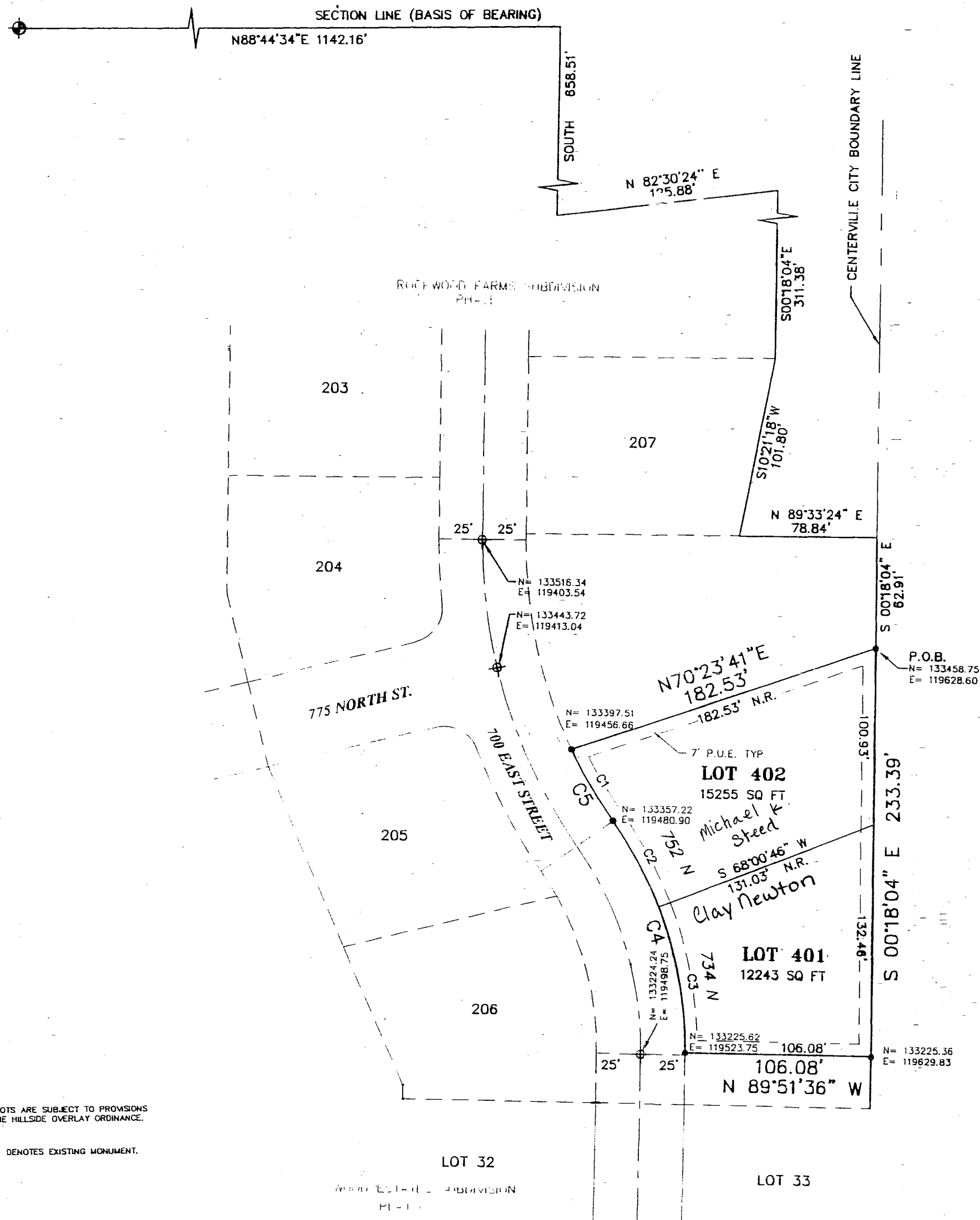
PREFIX
02-195

LAST #
0402



SCALE:
1" = 60'

NORTHWEST CORNER SECTION 8
TOWNSHIP 2 NORTH, RANGE 1 EAST,
SALT LAKE BASE AND MERIDIAN
N 134549.60
E 118299.40



- NOTES:
1. ALL EASEMENTS SHOWN ARE TYPICAL 7' WIDE PUBLIC UTILITY EASEMENTS (P.U.E.) UNLESS OTHERWISE NOTED.
 2. ALL COORDINATES SHOWN ARE BASED ON DAVIS COUNTY SURVEYOR'S OFFICE DATUM.
 3. APPROVAL OF THIS DEVELOPMENT PLAT BY CENTERVILLE CITY DOES NOT CONSTITUTE ANY REPRESENTATION AS TO THE ADEQUACY OF SUBSURFACE SOIL CONDITIONS NOR THE LOCATION OR DEPTH GROUND WATER TABLES.
 4. P.U.E. DENOTES A PUBLIC UTILITY EASEMENT AND A DRAINAGE EASEMENT.
 5. ALL LOTS ARE ZONED R-1-10.
 6. ALL LOTS ARE SUBJECT TO PROVISIONS OF THE HILLSIDE OVERLAY ORDINANCE.
 7. \oplus DENOTES EXISTING MONUMENT.

CURVE TABLE					
CURVE	LENGTH	RADIUS	DELTA	CHORD DIRECTION	CHORD LENGTH
C1	47.07'	275.00	9°48'28"	S31°02'37"E	47.02'
C2	55.49'	225.00	14°07'46"	N28°52'58"W	55.35'
C3	85.19'	225.00	21°41'40"	N10°58'15"W	84.69'
C4	140.68'	225.00	35°49'26"	N18°02'08"W	138.40'
C5	47.07'	275.00	9°48'28"	S31°02'37"E	47.02'

H & A HILL & ARGYLE, Inc.
Engineering and Surveying
181 North 200 West, Suite #4, Bountiful, Utah 84010
(801) 298-2236 Phone, (801) 298-5983 Fax
H&A PROJECT NO. 99-277
4/7/03 REV 5/13/03

DEVELOPMENT: ROCKWOOD FARMS SUBD. PH. 4
CITY: CENTERVILLE LOTS: 401 THRU 402

NW 1/4 SEC. 8, T.2N, R. 1E
S.L.M. DAVIS COUNTY, UTAH
FILE # 3951
R 11-24-03

195

02