

**CENTERVILLE MARKETPLACE SUBDIVISION PHASE 3**  
 LOCATED IN THE SOUTHWEST ONE-QUARTER OF SECTION 7,  
 TOWNSHIP 2 NORTH, RANGE 1 EAST, SALT LAKE BASE & MERIDIAN,  
 CITY OF CENTERVILLE, DAVIS COUNTY, UTAH  
 LOT 8 CENTERVILLE MARKETPLACE - LOT 201 CENTERVILLE MARKETPLACE PHASE 2

PREF IX  
 02-192  
 7  
 LAST #  
 0302



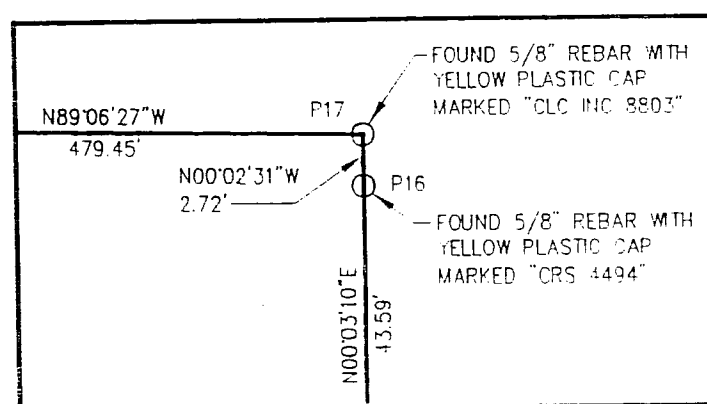
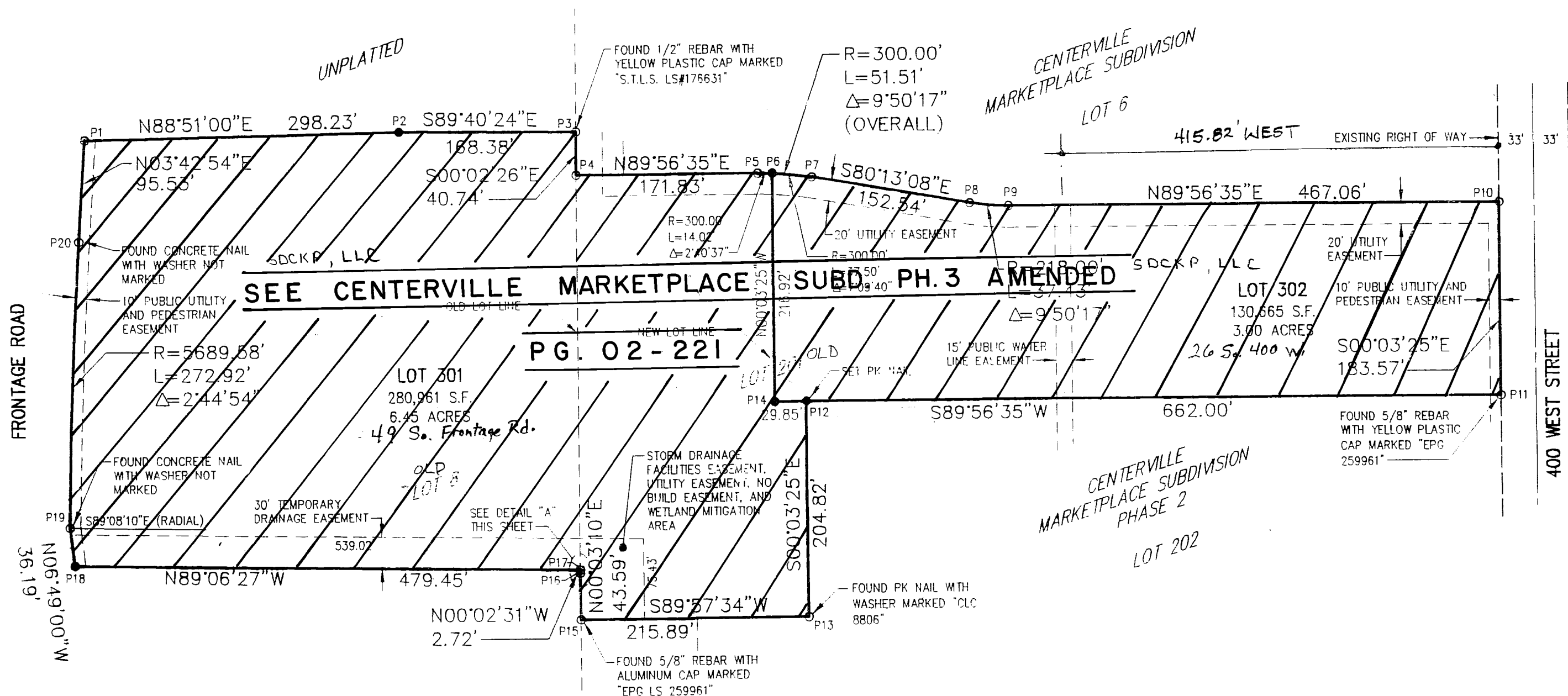
SCALE:  
 1" = 100'

DEVELOPMENT: CENTERVILLE MARKETPLACE PHASE 3

CITY: CENTERVILLE LOTS: 301 & 302

LOT 8, CENTERVILLE MARKETPLACE  
 LOT 201, CENTERVILLE MARKETPLACE PH.2  
 SW 1/4 SEC. 7, T.2N, R. 1E  
 S.L.M. DAVIS COUNTY, UTAH  
 FILE # 3826  
 R 04-17-03

DAYTON HUDSON CORPORATION OWNS  
 All Lots No: MARKED

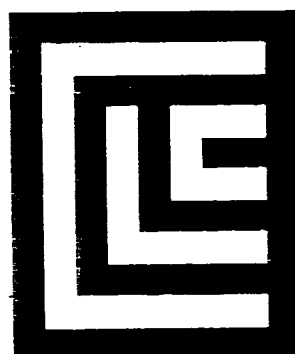


DETAIL "A"

**SYMBOL LEGEND**

- FOUND CONCRETE NAIL WITH WASHER MARKED "McNEIL ENG" UNLESS OTHERWISE NOTED
- SET 5/8" REBAR WITH YELLOW PLASTIC CAP MARKED "5166148" OR AS NOTED
- P1 COORDINATE LIST POINT NUMBER. REFER TO TABLE THIS SHEET

DAVIS COUNTY COORDINATE TABLE		
NO.	NORTHING	EASTING
P1	130220.62	113401.29
P2	130226.61	113699.46
P3	130225.65	113867.84
P4	130184.91	113867.87
P5	130185.08	114039.70
P6	130184.76	114053.71
P7	130180.72	114090.96
P8	130154.80	114241.28
P9	130151.63	114278.53
P10	130152.10	114745.59
P11	129968.53	114745.78
P12	129967.87	114083.78
P13	129763.05	114083.98
P14	129967.84	114053.92
P15	129762.90	113868.09
P16	129806.48	113868.13
P17	129809.21	113868.13
P18	129816.67	113388.74
P19	129852.61	113384.44
P20	130125.29	113395.10
P21	131888.35	113032.32
P22	129237.98	113036.60



**CLC ASSOCIATES**  
 350 SOUTH 400 EAST  
 SUITE 304  
 SALT LAKE CITY  
 UTAH 84111  
 P 801 363 5605  
 F 801 363 5604  
 CLCASSOC.COM  
 ARCHITECTURE  
 ENGINEERING PLANNING  
 LANDSCAPE ARCHITECTURE  
 LAND SURVEYING