

# Beyeler Subdivision

Being a part of the Southeast Quarter of Section 6,  
T. 2 N., R. 1 E., S.L.B.&M.  
Centerville City. Davis County, Utah

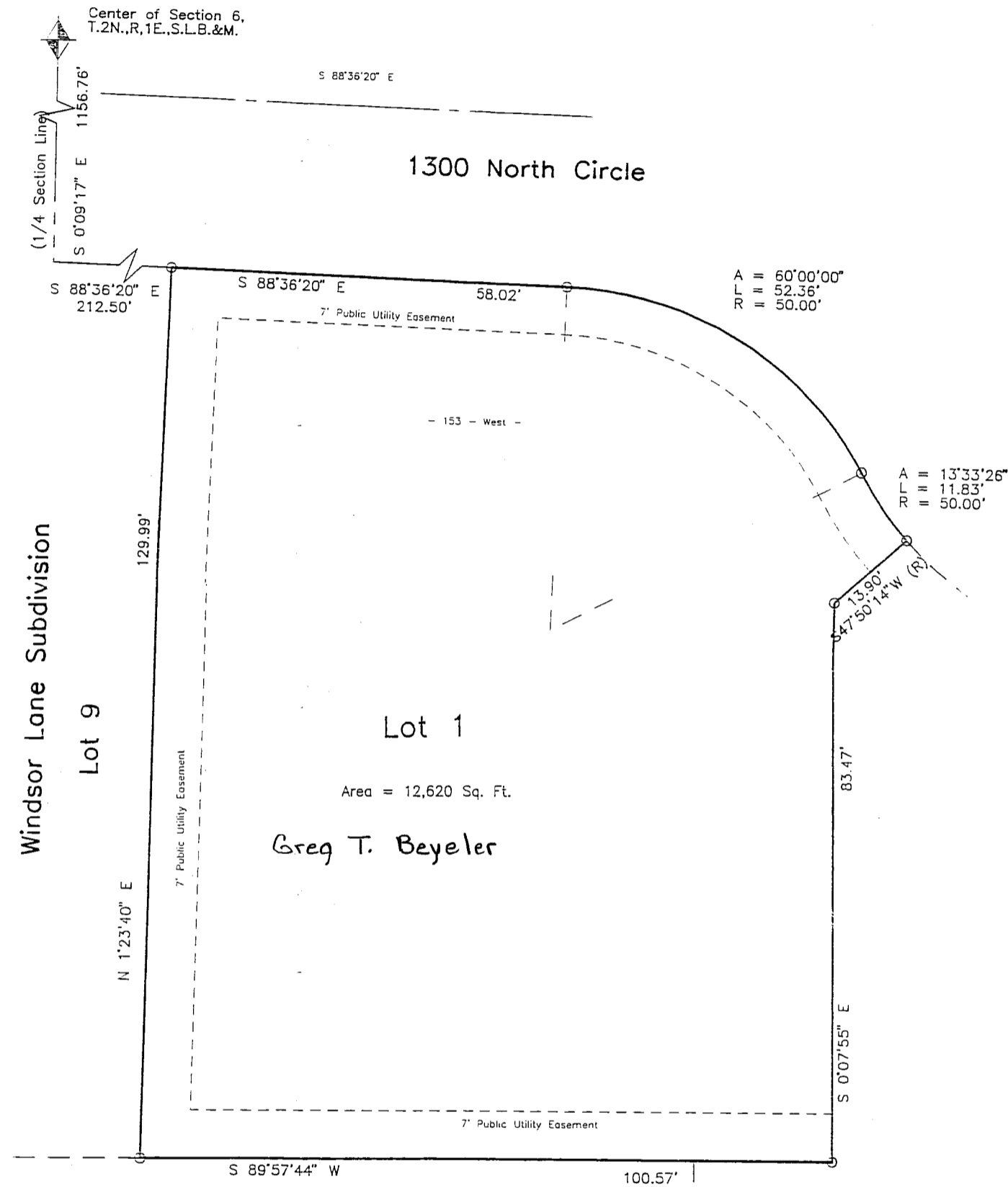
PREFIX  
02-190

LAST #

N



SCALE:  
1" = 20'



DEVELOPMENT: BEYELER SUBDIVISION

CITY: CENTERVILLE LOTS:1

SE 1/4 SEC. 6, T.2N, R. 1E

S.L.M. DAVIS COUNTY, UTAH

FILE # 3677  
R 05-10-02

## Notes:

1. All easements shown are typical 7 ft. wide Public Utility Easements (P. U. E.) unless otherwise noted.
2. All coordinates shown are based on Davis County Surveyor's Office Datum.
3. Approval of this development plat by Centerville City does not constitute any representation as to the adequacy of sub-surface soil condition nor the location or depth of groundwater tables.
4. Property zoned R-1-10 as of 2002.

**FPD** Balling  
Engineering

02-190