

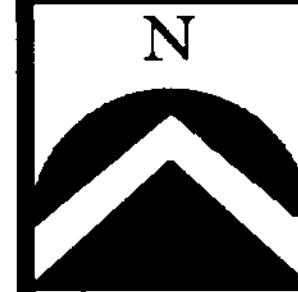
CENTERVILLE CORPORATE PARK

PART OF THE S.W. 1/4 OF SEC. 7 & PART OF THE N.W. 1/4 SEC 7
T.2N., R.1E., S.L.B. & M.
CENTERVILLE CITY, DAVIS COUNTY, UTAH

DAVIS COUNTY
COORDINATE SYSTEM

PREF IX 13
02-184

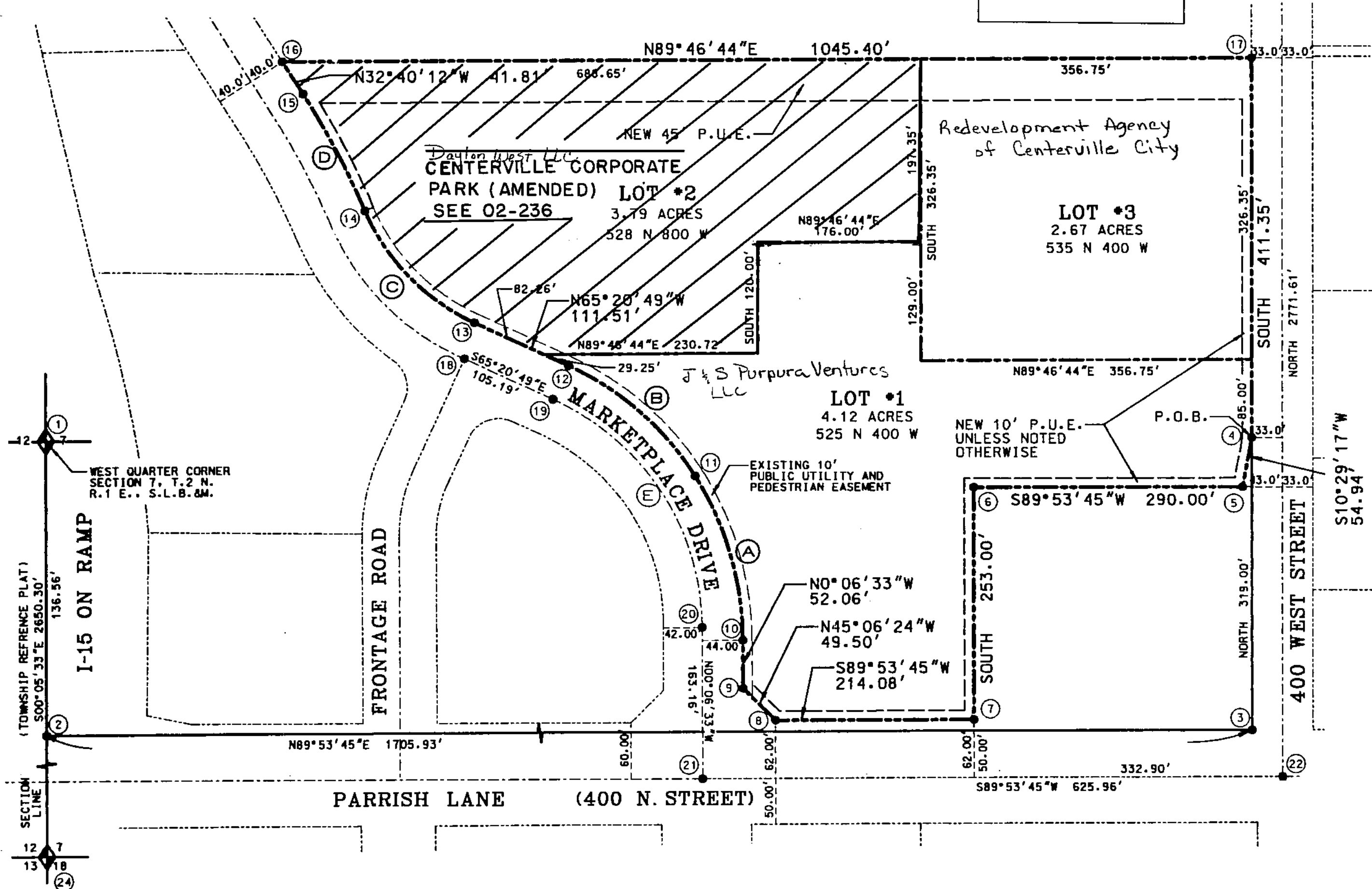
LAST #



SCALE:
1" = 100'

CURVE TABLE					
CURVE	RADIUS	LENGTH	DELTA	CHORD BEARING	LENGTH
A	341.89'	188.88'	31°39'13"	N15°56'10"W	186.49'
B	315.00'	184.64'	33°35'04"	N48°33'18"W	182.01'
C	235.00'	172.99'	42°10'37"	N44°15'30"W	169.11'
D	858.51'	142.35'	9°30'01"	N27°55'12"W	142.19'
E	275.00'	313.12'	65°14'16"	N32°43'42"W	296.48'

	NORTH	EAST
1	131.888.19	113.032.29
2	131.751.63	113.032.51
3	131.754.73	114.738.44
4	132.073.73	114.738.44
5	132.019.71	114.728.44
6	132.019.19	114.438.44
7	131.766.19	114.438.44
8	131.765.80	114.224.35
9	131.800.73	114.189.29
10	131.852.79	114.189.19
11	132.032.11	114.137.99
12	132.152.59	114.001.55
13	132.199.10	113.900.21
14	132.320.22	113.782.19
15	132.445.85	113.715.61
16	132.481.05	113.693.04
17	132.485.08	114.738.44
18	132.160.11	113.889.27
19	132.116.23	113.984.87
20	131.866.82	114.145.16
21	131.703.65	114.145.47
22	131.704.79	114.771.43
23	131.708.11	116.595.04
24	129.237.89	113.036.57



NOTES:

1. ALL LOTS ZONED C-2 AS OF MAY 2000.
2. ALL PUBLIC UTILITY EASEMENTS ARE 10' UNLESS NOTED OTHERWISE.
3. APPROVAL OF THE DEVELOPMENT PLAT BY CENTERVILLE CITY DOES NOT CONSTITUTE ANY REPRESENTATION AS TO THE ADEQUACY OF SUBSURFACE SOIL CONDITIONS NOR THE LOCATION OR DEPTH OF GROUND WATER TABLES.
4. ALL LOTS AND DEVELOPMENT SUBJECT TO PROVISIONS OF A CONDITIONAL USE PERMIT AND DEVELOPMENT AGREEMENT WHICH HAVE BEEN APPROVED BY CENTERVILLE CITY.
5. P.U.E. DENOTES A PUBLIC UTILITY AND DRAINAGE EASEMENT.
6. THE OWNER SHALL BE REQUIRED TO PROVIDE UTILITY EASEMENTS FOR ALL AS-BUILT UTILITIES AFTER THE UTILITIES ARE INSTALLED, IF THEY DO NOT LIE WITHIN THE BOUNDARIES OF AN EXISTING P.U.E.

PREPARED BY
ESI ENGINEERING
CONSULTING ENGINEERS AND LAND SURVEYORS
3500 SOUTH MAIN STREET SUITE 206
SALT LAKE CITY, UTAH 84115
(801) 263-1752

DEVELOPMENT: CENTERVILLE CORPORATE PARK

CITY: CENTERVILLE LOTS: 1, 2, 3

W 1/2 SECTION 7, T.2N., R. 1E
LOT 2, BLK 1, CENTERVILLE BC
S.L.M. DAVIS COUNTY, UTAH
R 06-01-00

184

02