

# DAN ROYALL SUBDIVISION

LOCATED IN THE SOUTHWEST QUARTER OF SECTION 31, T.3N, R.1E, SLB&M  
CENTERVILLE CITY, DAVIS COUNTY, UTAH

PREFIX  
02-179

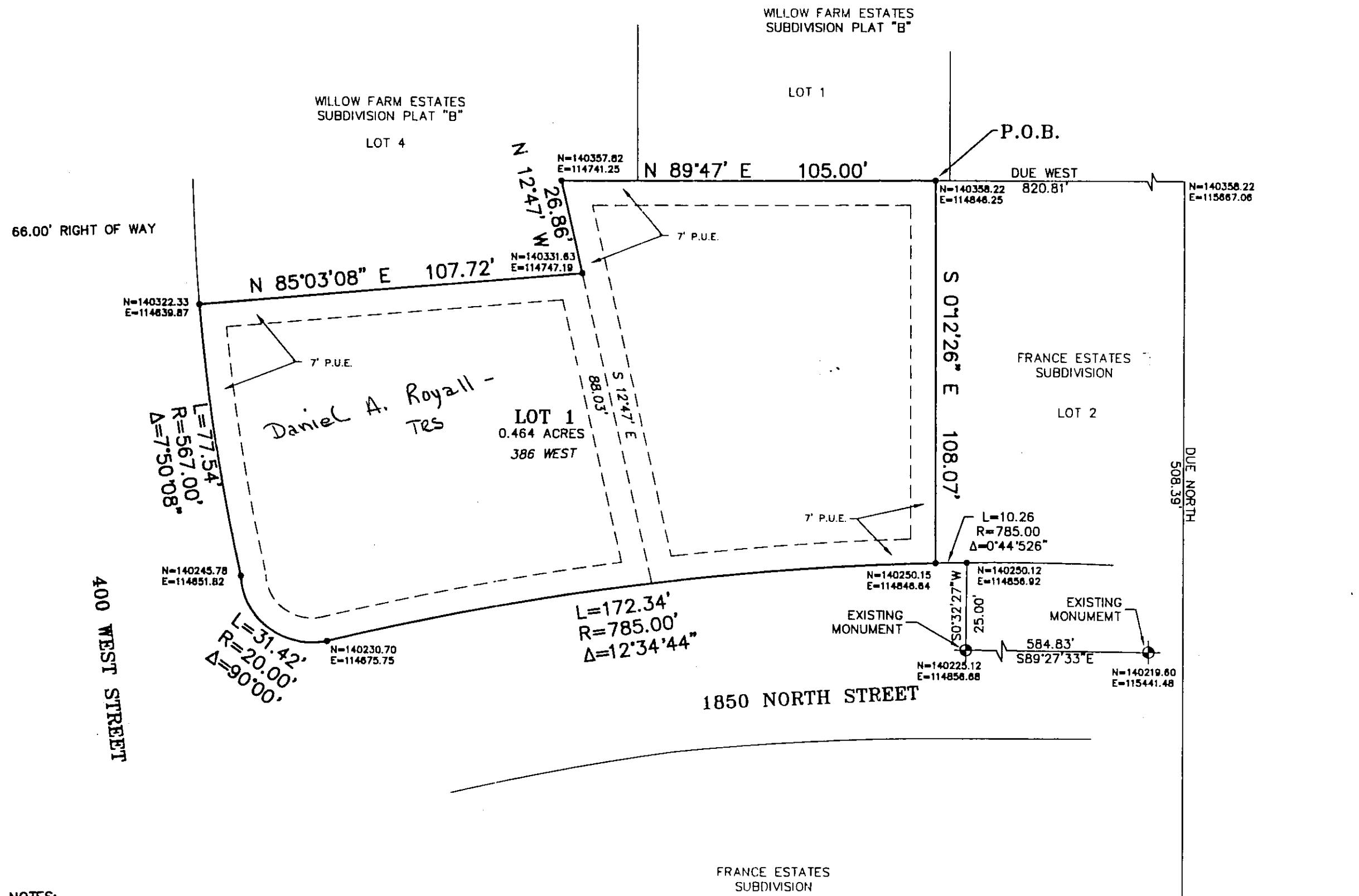
LAST #



SCALE:  
1" = 30'

SUBDIVISION: DAN ROYALL SUBDIVISION  
CITY: CENTERVILLE LOTS: 1

SW 1/4 SECTION 31 T3N R1E  
SALT LAKE MERIDIAN  
DAVIS COUNTY UTAH



NOTES:

1. ALL EASEMENTS SHOWN ARE TYPICAL 7' WIDE PUBLIC UTILITY EASEMENTS (P.U.E.) UNLESS OTHERWISE NOTED.
2. ALL COORDINATES SHOWN ARE BASED ON DAVIS COUNTY SURVEYOR'S OFFICE DATUM.
3. APPROVAL OF THIS DEVELOPMENT PLAT BY CENTERVILLE CITY DOES NOT CONSTITUTE ANY REPRESENTATION AS TO THE ADEQUACY OF SUBSURFACE SOIL CONDITIONS NOR THE LOCATION OR DEPTH OF GROUND WATER TABLES.
4. P.U.E. DENOTES A PUBLIC UTILITY EASEMENT AND A DRAINAGE EASEMENT
5. LOT 1 ZONED R-1-10.

611

02