

Sunrise Ridge Subdivision Phase 4

Being a part of the SW 1/4 of Section 17, T.2 N., R.1 E., S.L.B. & M.
Centerville City, Davis County, Utah

PREFIX *
02-178

LAST #
0407



SCALE:
1" = 40'

SUBDIVISION: SUNRISE RIDGE SUBDIVISION PHASE 4
CITY: CENTERVILLE LOTS: 401 - 405

SECTION 17 T2N R1W
SALT LAKE MERIDIAN
DAVIS COUNTY UTAH

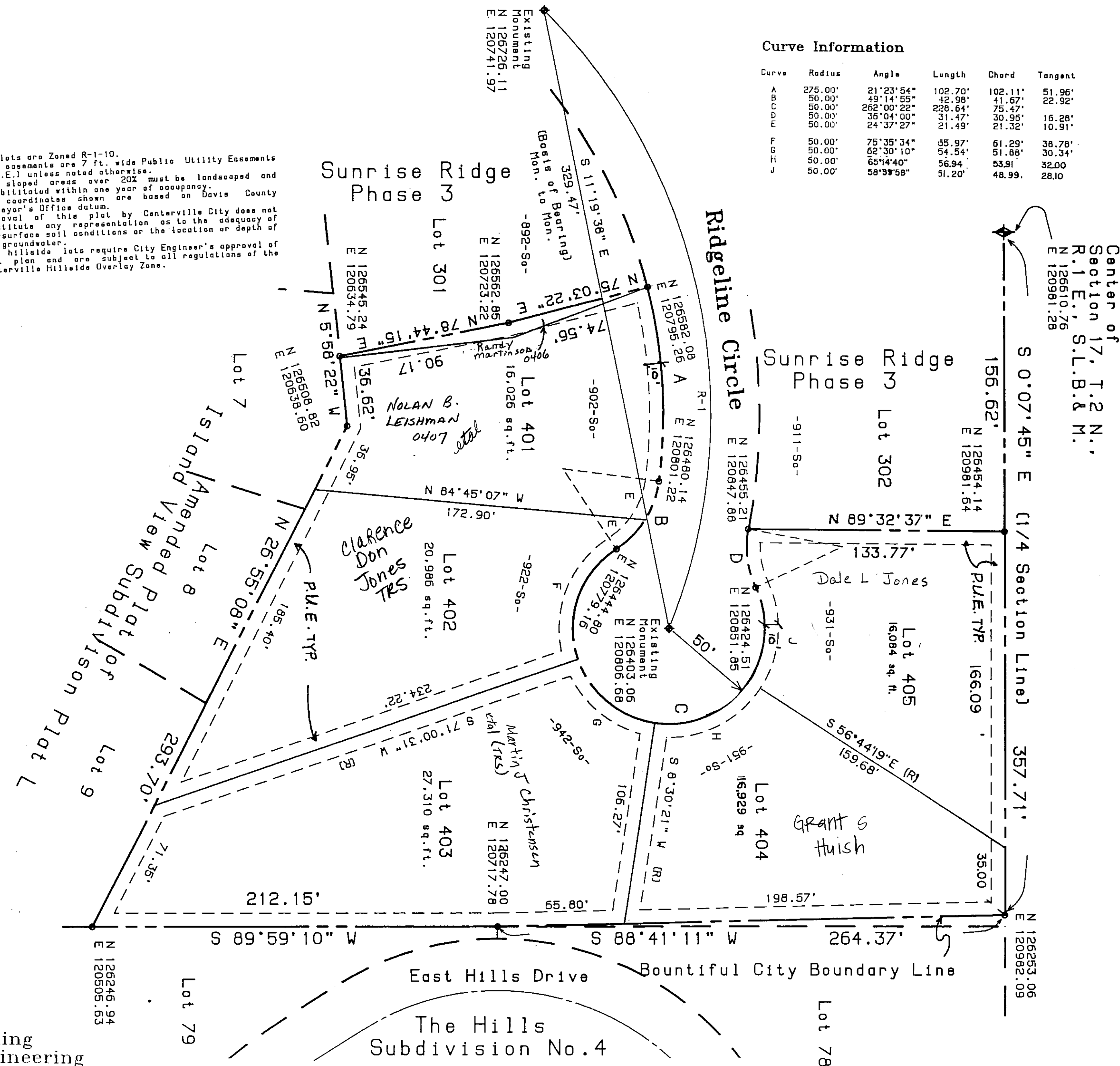
R 7*10*98

Curve Information

Curve	Radius	Angle	Length	Chord	Tangent
A	275.00'	21°23'54"	102.70'	102.11'	51.96'
B	50.00'	49°14'55"	42.98'	41.67'	22.92'
C	50.00'	262°00'23"	228.64'	75.47'	30.95'
D	50.00'	35°04'00"	31.47'	30.95'	16.28'
E	50.00'	24°37'27"	21.49'	21.32'	10.91'
F	50.00'	75°35'34"	65.97'	61.29'	38.78'
G	50.00'	62°30'10"	54.54'	51.88'	30.34'
H	50.00'	65°14'40"	56.94'	53.91'	32.00'
J	50.00'	58°37'58"	51.20'	48.99'	28.10'

Notes:

- All lots are Zoned R-1-10.
- All easements are 7 ft. wide Public Utility Easements (P.U.E.) unless noted otherwise.
- All sloped areas over 20% must be landscaped and rehabilitated within one year of occupancy.
- All coordinates shown are based on Davis County Surveyor's Office datum.
- Approval of this plat by Centerville City does not constitute any representation as to the adequacy of sub-surface soil conditions or the location or depth of any groundwater.
- All hillside lots require City Engineer's approval of plot plan and are subject to all regulations of the Centerville Hillside Overlay Zone.



Balling
Engineering

878

02