

THE PINES SUBDIVISION PHASE 2

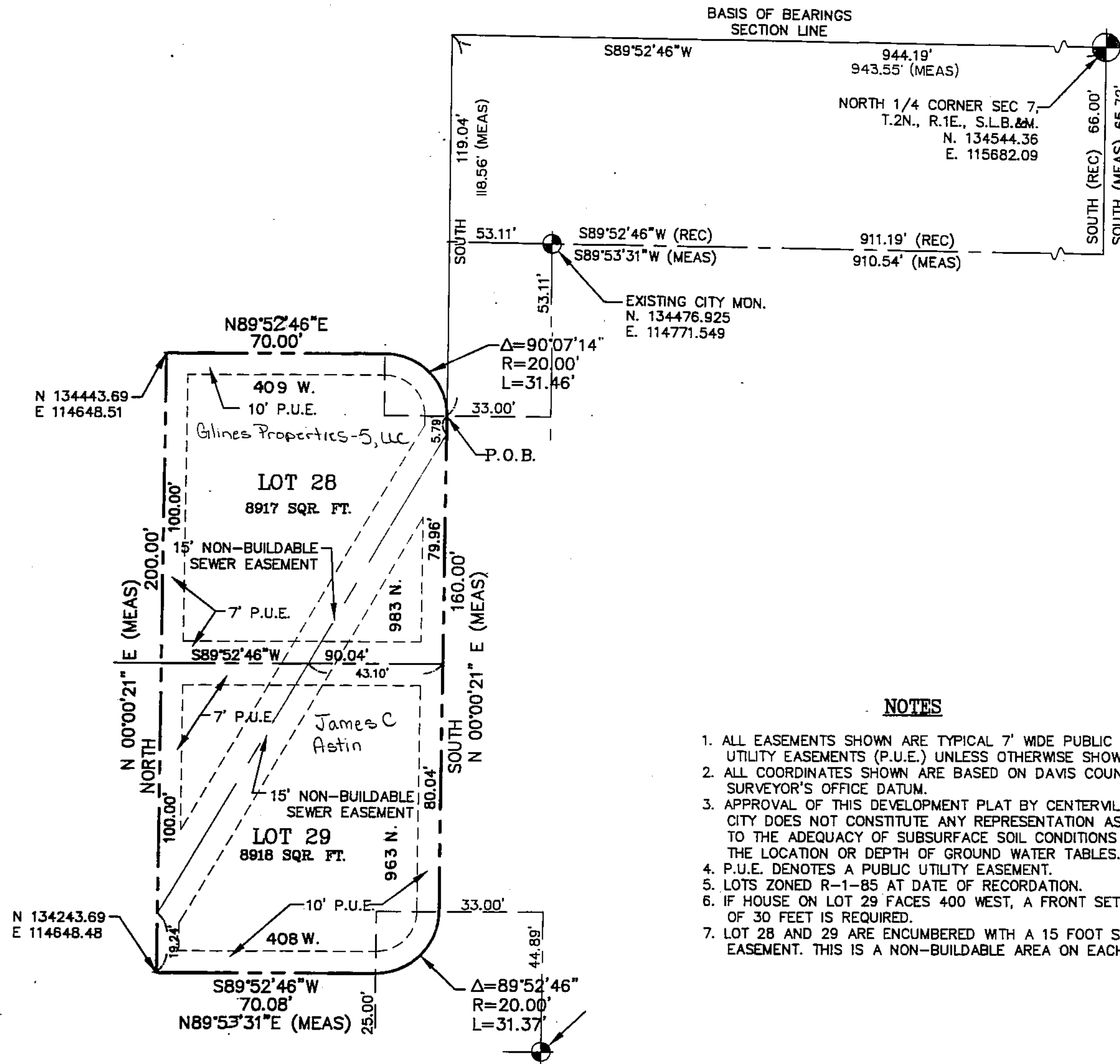
A PART OF THE NORTHWEST 1/4 OF SECTION 7 T. 2 N., R. 1 E.
S.L.B.&M. U.S. SURVEY. CENTERVILLE CITY, DAVIS COUNTY, UTAH

PREFIX
02-171

LAST #

N

SCALE:
1" = 30'



NOTES

1. ALL EASEMENTS SHOWN ARE TYPICAL 7' WIDE PUBLIC UTILITY EASEMENTS (P.U.E.) UNLESS OTHERWISE SHOWN.
2. ALL COORDINATES SHOWN ARE BASED ON DAVIS COUNTY SURVEYOR'S OFFICE DATUM.
3. APPROVAL OF THIS DEVELOPMENT PLAT BY CENTERVILLE CITY DOES NOT CONSTITUTE ANY REPRESENTATION AS TO THE ADEQUACY OF SUBSURFACE SOIL CONDITIONS NOR THE LOCATION OR DEPTH OF GROUND WATER TABLES.
4. P.U.E. DENOTES A PUBLIC UTILITY EASEMENT.
5. LOTS ZONED R-1-85 AT DATE OF RECORDATION.
6. IF HOUSE ON LOT 29 FACES 400 WEST, A FRONT SETBACK OF 30 FEET IS REQUIRED.
7. LOT 28 AND 29 ARE ENCUMBERED WITH A 15 FOOT SEWER EASEMENT. THIS IS A NON-BUILDABLE AREA ON EACH LOT.

SUBDIVISION: THE PINES PHASE 2
CITY: CENTERVILLE LOTS: 28-29

NW 1/4 SECTION 7 T2N R1E
SALT LAKE MERIDIAN
DAVIS COUNTY UTAH

R 7*22*97

Byrd & Associates LLC
Engineers & Land Surveyors

171

02