

FRONTAGE ROAD SUBDIVISION AMENDED

BEING ALL OF LOT 3
FRONTAGE ROAD SUBDIVISION
(A NON-RESIDENTIAL SUBDIVISION)
A SUBDIVISION OF THE SOUTHWEST QUARTER
OF SECTION 7, TOWNSHIP 2 NORTH, RANGE 1 EAST,
SALT LAKE BASE AND MERIDIAN
CENTERVILLE CITY, DAVIS CO., UTAH

BASIS OF BEARING
FROM THE SOUTHWEST CORNER
OF SECTION 7 TO THE CENTER
OF THE NORTH DOME (FRANCIS PEAK)
N18°47'32" E, DAVIS COUNTY
COORDINATE SYSTEM

PREFIX
02-160

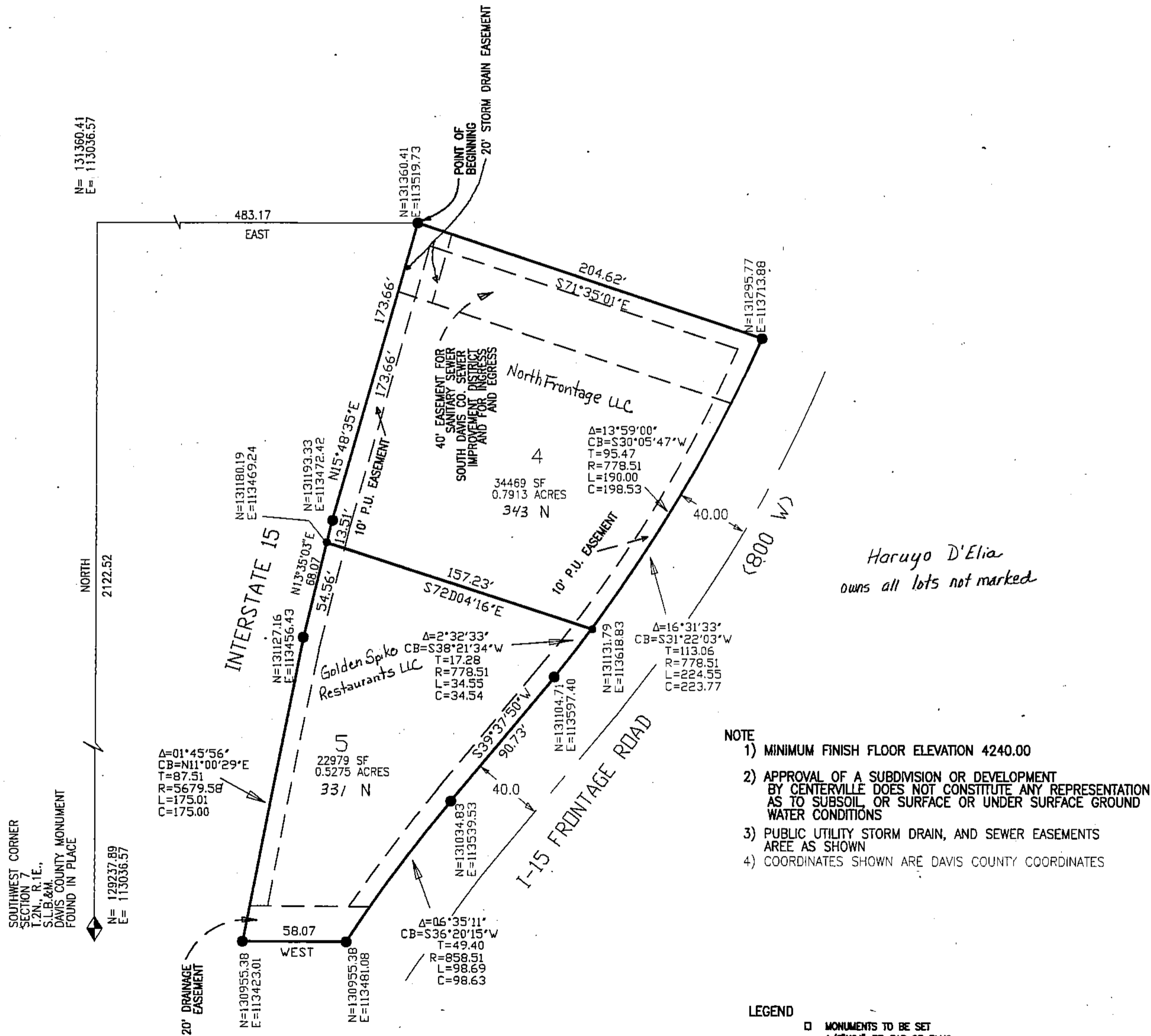
LAST #



SCALE:
1" = 50'

160

02



- NOTE
- 1) MINIMUM FINISH FLOOR ELEVATION 4240.00
 - 2) APPROVAL OF A SUBDIVISION OR DEVELOPMENT BY CENTERVILLE DOES NOT CONSTITUTE ANY REPRESENTATION AS TO SUBSOIL, OR SURFACE OR UNDER SURFACE GROUND WATER CONDITIONS
 - 3) PUBLIC UTILITY STORM DRAIN, AND SEWER EASEMENTS ARE AS SHOWN
 - 4) COORDINATES SHOWN ARE DAVIS COUNTY COORDINATES

- LEGEND
- MONUMENTS TO BE SET
 - 1/2" X 24" RE-BAR OR PLUG IN CURB TO BE SET ON ALL INTERIOR LOT CORNERS
 - 5/8" X 24" RE-BAR W/CAP TO BE SET ON OUTSIDE BOUNDARY CORNERS
 - PUBLIC UTILITY AND DRAINAGE EASEMENTS
 - FRONT LOT LINE EASEMENT IS 10.00 FEET
 - BOUNDARY EASEMENTS ARE 10.00 FEET UNLESS OTHERWISE SHOWN

SURVEYOR: RALPH E. GOFF

SUBDIVISION: FRONTAGE ROAD AMENDED

CITY: CENTERVILLE LOTS: 4 & 5

ALL OF LOT 3, FRONTAGE ROAD SUBD.

SW SECTION 07 T 2N R 1E
SALT LAKE MERIDIAN
DAVIS COUNTY UTAH