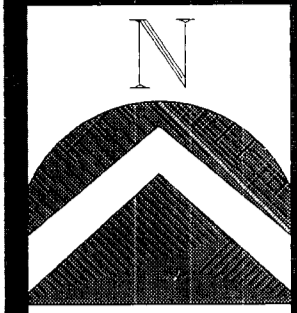


PREFIX
02-158

LAST #



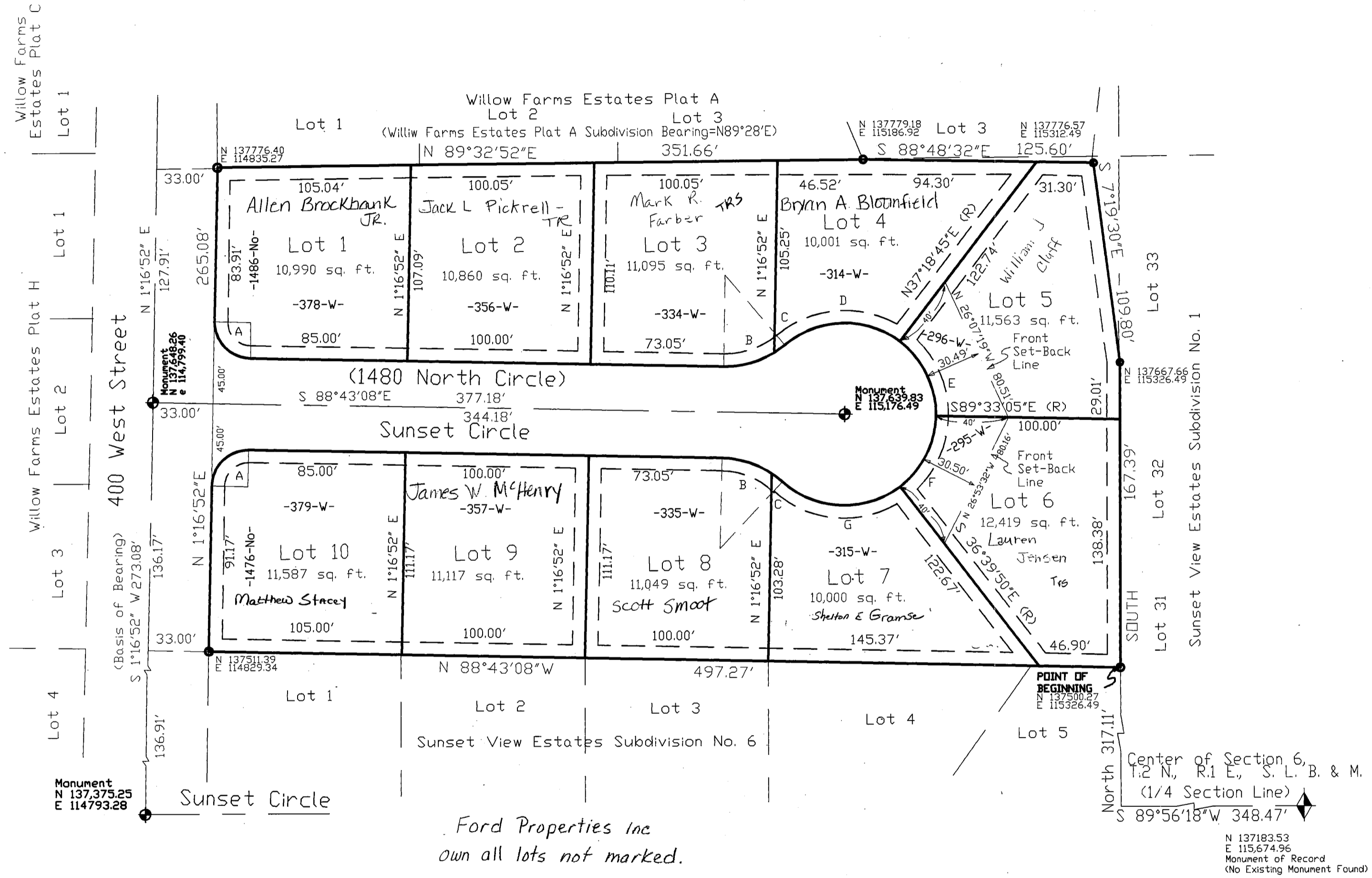
SCALE:
1" = 50'

Sunset View Estates Subdivision No.7

Being a Part of the Northwest Quarter of Section 6, T.2N., R.1E., S.L.B.&M.
Centerville City, Davis County, Utah

158

02



Ford Properties Inc
own all lots not marked.

- Notes**
- All Easements shown are typical 7ft. wide public Utility Easements (P.U.E.) unless otherwise noted.
 - All coordinates shown are based on Davis County Surveyor's Office Datum.
 - Approval of this development plat by Centerville city does not constitute any representation as to the adequacy of sub-surface soil condition nor the location or depth of groundwater tables.

Curve Information

Curve	Radius	Angle	Length	Chord	Tangent
A	20.00'	90°00'00"	31.42'	28.28'	20.00'
B	50.00'	36°37'15"	29.47'	26.09'	14.63'
C	50.00'	8°37'50"	7.67'	7.66'	3.84'
D	50.00'	77°26'28"	67.58'	62.55'	40.09'
E	50.00'	53°08'10"	46.37'	44.73'	25.00'
F	50.00'	52°53'15"	46.15'	44.53'	24.87'
G	50.00'	79°21'17"	69.25'	63.85'	41.48'

Ballig
Engineering

SUBDIVISION: SUNSET VIEW ESTATES NO.7
CITY: CENTERVILLE LOTS: 1 THRU 10

NW SECTION 06 T 2N R 1E
SALT LAKE MERIDIAN
DAVIS COUNTY UTAH