

Country Cottages Plat "C"

A Planned Unit Development

A Part of Lot 5, Block 21, Big Creek Plat, Centerville Townsite Survey
in the Southeast 1/4 of Section 7, T2N, R1E, SLB & M, U.S. Survey
Centerville City, Davis County, Utah

PRELIM

02-148

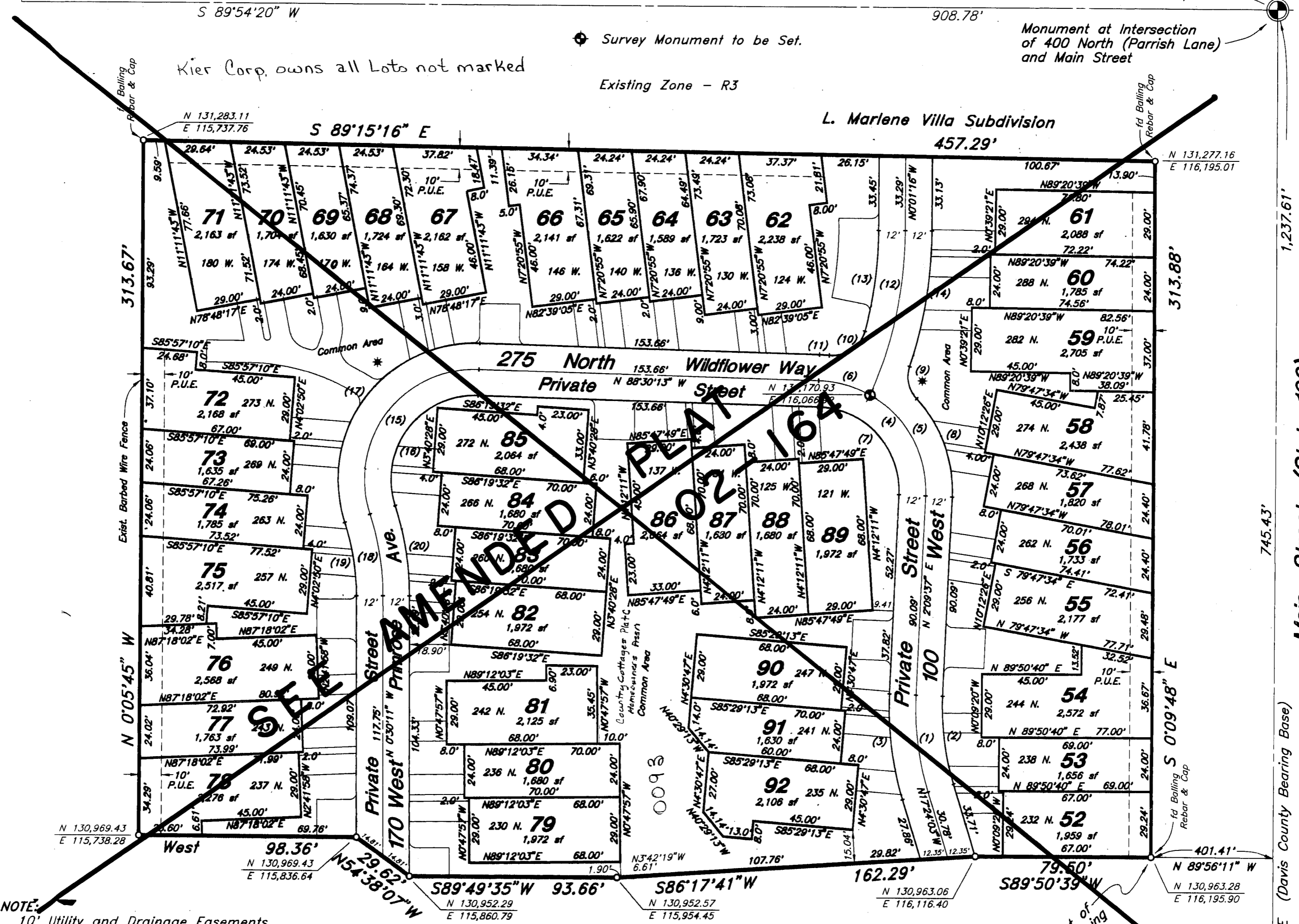
EAST

0093

NORTH

SCALE
1" = 40'

Center of Sec. 7,
T2N, R1E, SLB&M



NOTE:
10' Utility and Drainage Easements
as indicated by dashed lines unless
otherwise shown.

NARRATIVE:
The Perimeter Boundary Lines of Country Cottages Plats A, B and C were established by a ALTA/ACSM Land Title Survey of this property by Balling Engineering, signed by J. Scott Balling, Surveyor No. 5875, dated April 14, 1993. Balling Engineering Rebar and Caps were found and verified by Great Basin Engineering at all property corners. The Bearing Base was established between existing monuments found at the Intersections of State Road 106 and Parrish Lane and State Road 106 and 100 North Street with a Davis County Surveyors Bearing of S 0'09'48" E between monuments.

- NOTES:**
- All areas including roadways, except public streets not within the numbered lots are Common Areas and facilities, certain of which are marked Common Area hereon.
 - All Common Area is an Easement for Public Utility and Drainage Purposes, this includes the Private Streets.
 - The Common Area will be owned, managed and maintained by the Country Cottages Home Owners Association, a Utah Non-Profit Corporation.
 - Approval of this development plat by Centerville City does not constitute any representation as to the adequacy of sub-surface soil conditions nor the location or depth of ground water tables.

Scale : 1" = 40'

Monument at Intersection
of 100 North Street
and Main Street

PREPARED BY:
GREAT BASIN ENGINEERING, INC.
CONSULTING ENGINEERS & SURVEYORS

(1) Δ = 19°33'40" R = 130.00" L = 44.38" LC = 44.17" S 73°13' E	(2) Δ = 19°33'40" R = 118.00" L = 40.29" LC = 40.09" S 73°13' E	(3) Δ = 19°33'40" R = 142.00" L = 48.48" LC = 48.24" S 73°13' E	(4) Δ = 90°39'51" R = 50.00" L = 78.12" LC = 71.12" N 43°10'18" W	(5) Δ = 62°51'12" R = 50.00" L = 54.85" LC = 52.14" N 29°13'59" W	(11) Δ = 4°04'50" R = 62.00" L = 4.42" LC = 4.41" N 86°27'49" W	(12) Δ = 23°29'46" R = 186.59" L = 76.52" LC = 75.99" N 11°43'37" E	(13) Δ = 15°01'00" R = 174.59" L = 45.78" LC = 45.63" N 72°29'14" E	(14) Δ = 17°55'55" R = 198.59" L = 62.15" LC = 61.90" N 8°56'41" E	(15) Δ = 110°11'07" R = 50.00" L = 96.15" LC = 82.01" S 36°24'13" W
(6) Δ = 27°48'38" R = 50.00" L = 24.27" LC = 24.03" N 74°35'55" W	(7) Δ = 90°39'51" R = 38.00" L = 60.13" LC = 54.05" N 43°10'18" W	(8) Δ = 44°53'04" R = 62.00" L = 48.57" LC = 47.34" N 20°16'55" W	(9) Δ = 60°38'06" R = 15.00" L = 15.87" LC = 15.14" S 12°24'24" E	(10) Δ = 80°34'53" R = 15.00" L = 21.10" LC = 19.40" N 55°17'11" E	(16) Δ = 110°11'07" R = 38.00" L = 73.08" LC = 62.33" S 36°24'13" W	(17) Δ = 110°11'07" R = 62.00" L = 119.23" LC = 101.69" S 36°24'13" W	(18) Δ = 18°11'10" R = 117.82" L = 37.40" LC = 37.24" N 9°35'46" W	(19) Δ = 18°11'10" R = 105.82" L = 33.59" LC = 33.45" N 9°35'45" W	(20) Δ = 18°11'10" R = 129.82" L = 41.20" LC = 41.03" N 9°35'46" W

148
02

SUBDIVISION COUNTRY COTTAGES PLAT "C" P.U.D.
CITY CENTERVILLE
DAVIS COUNTY GEOGRAPHIC INFORMATION DIVISION & COMMON

SE SECTION 7 T2N R1E
Salt Lake Meridian
Davis County, Utah
LOT 5, BLOCK 21, BIG CREEK PLAT

RI-28-94