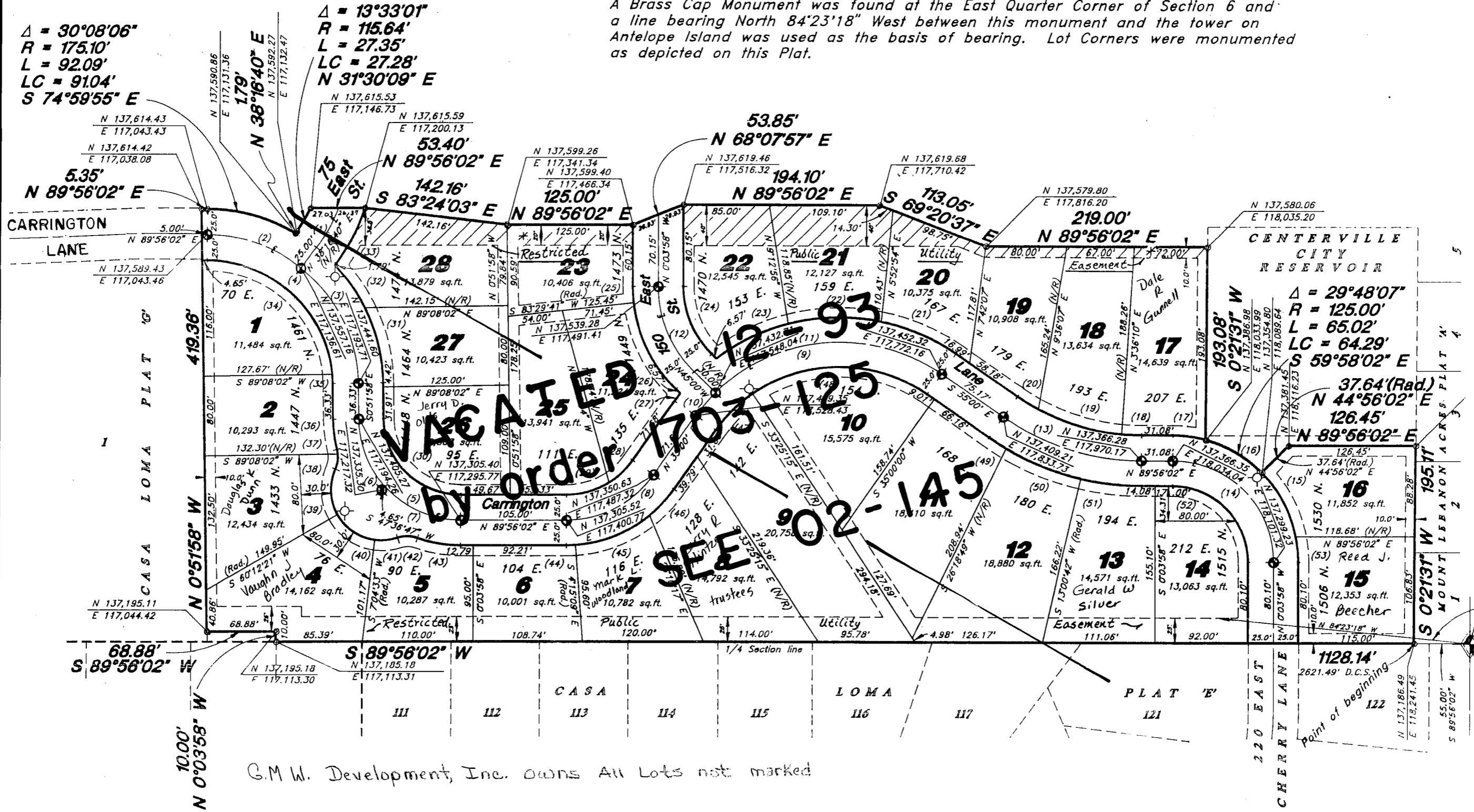


# Carrington Heights No. 1

A part of the NE 1/4 of Section 6, T2N, R1E, SLB&M, U.S. Survey  
Centerville City, Davis County, Utah  
December, 1992

### NARRATIVE

This Survey and Subdivision was requested by Mr. Gary Wright for the purpose of surveying and subdividing the property into residential lots. A Brass Cap Monument was found at the East Quarter Corner of Section 6 and a line bearing North 84°23'18" West between this monument and the tower on Antelope Island was used as the basis of bearing. Lot Corners were monumented as depicted on this Plat.



### CURVE DATA

(1) Δ = 18°10'26" R = 140.64' L = 44.61' LC = 44.42' N 29°11'26" E T = 148.02'	(2) Δ = 38°20'38" R = 150.10' L = 100.45' LC = 98.58' S 70°53'39" E T = 100.00'	(3) Δ = 50°51'22" R = 150.10' L = 132.23' LC = 128.90' S 26°17'39" E T = 100.00'	(4) Δ = 89°12'00" R = 150.10' L = 233.68' LC = 210.28' S 45°27'58" E T = 100.00'	(5) Δ = 89°12'00" R = 101.41' L = 157.87' LC = 142.41' S 45°27'58" E T = 100.00'	(6) Δ = 41°31'15" R = 101.41' L = 73.49' LC = 71.89' S 21°37'36" E T = 100.00'	(7) Δ = 47°40'45" R = 101.41' L = 84.39' LC = 81.97' S 66°13'36" E T = 100.00'	(8) Δ = 54°56'02" R = 105.80' L = 101.44' LC = 97.60' E 62°28'01" E T = 55.00'	(9) Δ = 90°00'00" R = 175.00' L = 30.54' LC = 30.51' S 40°00'00" W T = 175.00'	(10) Δ = 10°00'00" R = 175.00' L = 30.54' LC = 30.51' S 40°00'00" W T = 175.00'	(11) Δ = 80°00'00" R = 120.91' L = 244.35' LC = 224.98' S 85°00'00" W T = 50.00'	(12) Δ = 44°56'02" R = 120.91' L = 145.29' LC = 143.03' S 22°31'59" E T = 50.00'	(13) Δ = 35°03'58" R = 237.39' L = 145.29' LC = 143.03' S 25°45'10" E T = 75.00'	(14) Δ = 90°00'00" R = 125.00' L = 157.08' LC = 141.42' S 45°03'58" E T = 100.00'	(15) Δ = 32°39'20" R = 125.00' L = 71.24' LC = 70.28' N 28°44'18" W T = 100.00'	(16) Δ = 29°48'07" R = 125.00' L = 65.02' LC = 64.29' N 59°58'02" W T = 100.00'	(17) Δ = 15°11'53" R = 125.00' L = 33.16' LC = 33.08' S 82°28'02" E T = 100.00'	(18) Δ = 50°41'11" R = 212.39' L = 18.79' LC = 18.79' N 87°31'52" W T = 100.00'	(19) Δ = 23°28'10" R = 212.39' L = 87.00' LC = 88.39' N 73°15'42" W T = 100.00'	(20) Δ = 6°31'37" R = 212.39' L = 24.19' LC = 24.18' N 58°15'48" W T = 100.00'	(21) Δ = 23°15'30" R = 200.00' L = 81.19' LC = 80.63' S 88°25'13" W T = 100.00'	(22) Δ = 26°38'33" R = 200.00' L = 81.19' LC = 80.63' S 88°25'13" W T = 100.00'	(23) Δ = 22°55'06" R = 200.00' L = 93.00' LC = 79.47' S 63°38'24" W T = 100.00'	(24) Δ = 44°56'02" R = 95.91' L = 80.00' LC = 73.30' N 22°31'59" W T = 50.00'	(25) Δ = 6°26'21" R = 145.91' L = 16.40' LC = 16.39' S 31°70'08" E T = 50.00'	(26) Δ = 38°29'41" R = 145.91' L = 98.03' LC = 98.20' S 25°45'10" E T = 50.00'	(27) Δ = 24°09' R = 200.00' L = 9.84' LC = 9.84' S 36°24'35" W T = 100.00'	(28) Δ = 23°01'31" R = 80.80' L = 32.47' LC = 32.25' S 46°30'46" W T = 100.00'	(29) Δ = 31°54'31" R = 80.80' L = 45.00' LC = 44.42' S 73°58'47" W T = 100.00'	(30) Δ = 89°12'00" R = 76.41' L = 118.95' LC = 107.30' N 45°27'58" W T = 100.00'	(31) Δ = 25°34'13" R = 175.10' L = 78.14' LC = 77.50' N 13°39'04" W T = 100.00'	(32) Δ = 17°04'38" R = 175.10' L = 52.19' LC = 52.00' N 34°58'30" W T = 100.00'	(33) Δ = 21°19'14" R = 165.64' L = 61.64' LC = 61.28' N 27°37'03" E T = 100.00'	(34) Δ = 95°00'21" R = 125.10' L = 185.60' LC = 169.04' S 47°33'47" E T = 100.00'	(35) Δ = 41°11'39" R = 126.41' L = 29.97' LC = 29.91' S 7°39'37" E T = 100.00'	(36) Δ = 13°35'19" R = 30.00' L = 4.88' LC = 4.87' S 9°47'30" E T = 100.00'	(37) Δ = 9°19'35" R = 30.00' L = 4.88' LC = 4.87' S 9°47'30" E T = 100.00'	(38) Δ = 29°03'48" R = 30.00' L = 15.22' LC = 15.06' S 24°11'11" W T = 100.00'	(39) Δ = 53°43'43" R = 50.00' L = 46.89' LC = 45.19' S 2°53'47" E T = 100.00'	(40) Δ = 53°07'48" R = 50.00' L = 46.37' LC = 44.72' S 56°21'33" E T = 100.00'	(41) Δ = 25°47'04" R = 30.00' L = 22.50' LC = 22.31' N 84°11'01" E T = 100.00'	(42) Δ = 38°23'21" R = 30.00' L = 19.73' LC = 19.73' S 89°30'50" E T = 100.00'	(43) Δ = 19°44'48" R = 126.41' L = 43.57' LC = 43.35' S 80°11'34" E T = 100.00'	(44) Δ = 4°11'11" R = 130.80' L = 9.56' LC = 9.56' N 87°50'26" E T = 100.00'	(45) Δ = 35°20'06" R = 130.80' L = 80.67' LC = 79.40' N 68°04'48" E T = 100.00'	(46) Δ = 15°24'45" R = 130.80' L = 35.19' LC = 35.08' N 42°42'22" E T = 100.00'	(47) Δ = 19°44'20" R = 150.00' L = 51.68' LC = 51.42' N 44°52'10" E T = 100.00'	(48) Δ = 70°15'40" R = 150.00' L = 183.94' LC = 172.63' N 89°52'10" E T = 100.00'	(49) Δ = 43°54'3" R = 262.39' L = 21.05' LC = 21.04' S 57°17'52" E T = 100.00'	(50) Δ = 17°23'35" R = 262.39' L = 79.65' LC = 79.35' S 68°17'30" E T = 100.00'	(51) Δ = 13°04'40" R = 262.39' L = 59.89' LC = 59.76' S 83°31'38" E T = 100.00'	(52) Δ = 90°00'00" R = 75.00' L = 117.91' LC = 106.07' S 45°03'58" E T = 100.00'
---	--	---	---	---	---	---	---	---	--	---	---	---	--	--	--	--	--	--	---	--	--	--	--	--	---	---	---	---	---	--	--	--	--	---	--	---	---	--	---	---	---	--	---	--	--	--	--	---	--	--	---

Scale: 1" = 100'

Survey Monument to be set.

Street Light Pole

Note:  
Rebar and Great Basin Eng.  
cap set at all lot corners.

### NOTE:

- 10' Wide Utility and Drainage Easements each side of Property Line as indicated by dashed lines unless otherwise shown.
- Restricted Easement along South and North means no retaining walls and no grading allowed.

SUBDIVISION CARRINGTON HEIGHTS NO. 1  
CITY CENTERVILLE  
LOTS 1 TO 28  
DAVIS COUNTY GEO-GRAPHIC INFORMATION DIVISION

NE 1/4 SECTION 6 T2N R1E  
Salt Lake Meridian  
Davis County, Utah  
R-4-21-93

140

02

East 1/4 Corner of Sec. 6, T2N, R1E, SLB&M, U.S. Survey - N 137,146.55' E 118,296.45' (Pd. Brass Cap)