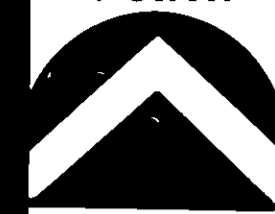


PREFIX

02-138
LAST#

NORTH

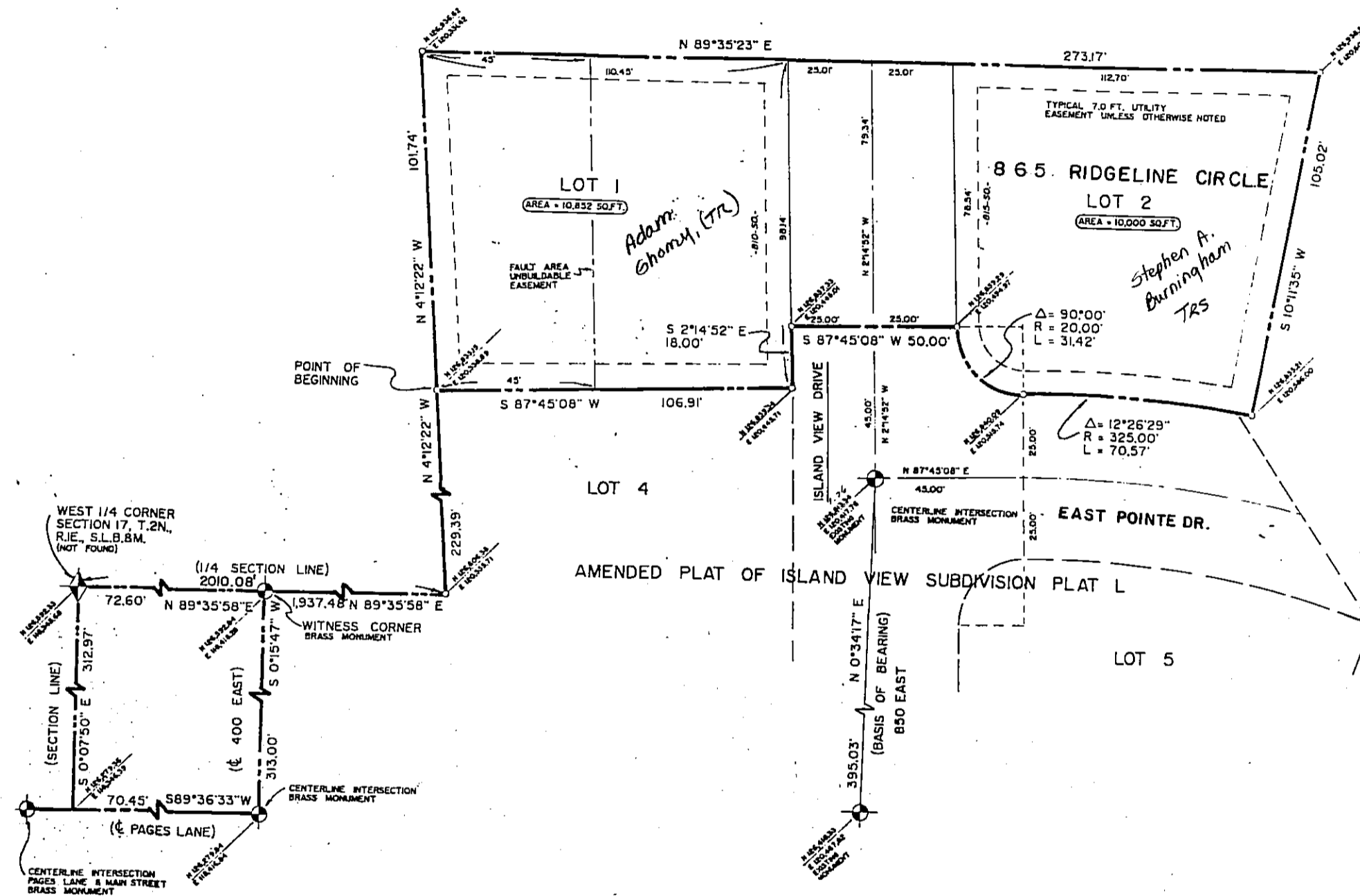


SCALE
1" = 40'

ISLAND VIEW SUBDIVISION PLAT M

BEING A PART OF THE NORTHWEST QUARTER OF SECTION 17, T.2N., R.1E., S.L.B.&M.
CENTERVILLE CITY, DAVIS COUNTY, UTAH

Island View Homes owns All lots not marked



NOTES:

1. ALL EASEMENTS SHOWN ARE TYPICAL 7 FT. WIDE PUBLIC UTILITY EASEMENT (P.U.E.) UNLESS OTHERWISE NOTED
2. ALL COORDINATES SHOWN ARE BASED ON DAVIS COUNTY SURVEYOR'S OFFICE DATUM.
3. APPROVAL OF THIS DEVELOPEMENT PLAT BY CENTERVILLE CITY DOES NOT CONSTITUTE ANY STATEMENT AS TO THE ADEQUACY OF SUB-SURFACE SOIL CONDITION NOR THE LOCATION OR DEPTH OF GROUNDWATER TABLES.

SUBDIVISION ISLAND VIEW PLAT M

CITY CENTERVILLE LOTS 1 TO 2

DAVIS COUNTY GEO-GRAPHIC INFORMATION DIVISION

NW1/4SECTION 17 T2N R1E

Salt Lake Meridian
Davis County, Utah

138

02