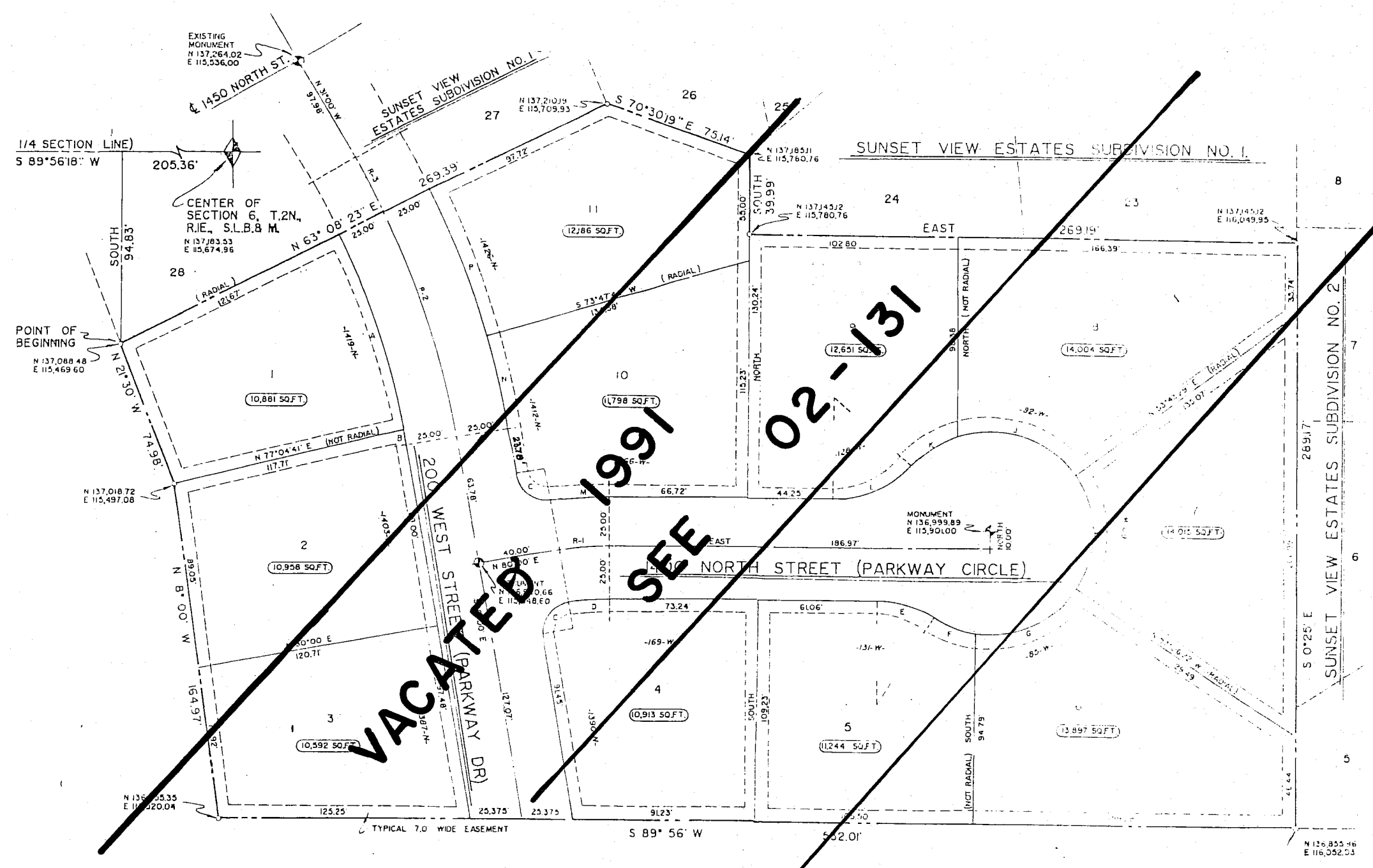
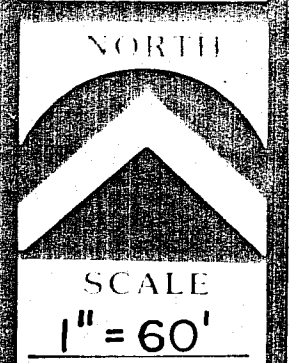


SUNSET VIEW ESTATES SUBDIVISION NO. 3

BEING A PART OF SECTION 6, T.2N., R.1E., S.1B.8M.,
CENTERVILLE CITY, DAVIS COUNTY, UTAH



Ford Properties Inc owns All Lots Not Marked

CURVE INFORMATION

CURVE	RADIUS	ANGLE	LENGTH	CHORD	TANGENT
A	375.00'	15°56'36"	104.35'	104.01'	52.51'
B	375.00'	0°55'00"	6.00'	6.00'	3.00'
C	15.00'	90°00'	23.56'	21.21'	15.00'
D	125.00'	10°00'	21.82'	21.79'	10.94'
E	50.00'	31°47'17"	27.74'	27.39'	14.24'
F	50.00'	22°18'39"	19.47'	19.35'	9.86'
G	50.00'	66°35'	58.10'	54.89'	32.83'
H	50.00'	69°10'09"	60.36'	56.76'	34.47'
J	50.00'	74°08'45"	64.71'	60.28'	37.78'
K	50.00'	29°02'14"	25.34'	25.07'	12.95'
L	50.00'	49°27'30"	43.16'	41.83'	23.03'
M	175.00'	10°00'	30.54'	30.50'	15.31'
N	425.00'	6°12'13"	46.02'	45.99'	23.03'
P	425.00'	10°39'24"	79.04'	78.93'	39.64'
R-1	150.00'	10°00'	26.18'	26.15'	13.12'
R-2	400.00'	16°51'36"	117.71'	117.28'	59.28'
R-3	400.00'	4°08'23"	28.90'	28.90'	14.46'

NOTES:

- ALL EASEMENTS ARE 7.0 FT. WIDE TYPICAL UTILITY EASEMENTS UNLESS OTHERWISE NOTED.
- APPROVAL OF THIS DEVELOPMENT PLAT BY CENTERVILLE CITY DOES NOT CONSTITUTE ANY REPRESENTATION AS TO ADEQUACY OF SUBSURFACE SOIL CONDITIONS NOR THE LOCATION OR DEPTH OF GROUND WATER TABLES.
- ALL COORDINATES ARE BASED ON DAVIS COUNTY SURVEYORS OFFICE DATUM.

SUBDIVISION SUNSET VIEW ESTATES NO. 3
 CITY CENTERVILLE LOTS I TO II
 DAVIS COUNTY GEO-GRAPHIC INFORMATION DIVISION

ALL 1/4 SECTION 6 T2N R1E
Salt Lake Meridian
Davis County, Utah

1080

02