

# NORTH PARK SUBDIVISION PLAT A

Tax ID Prefix

**02-087**

Plat ID: 260

Sheet 1 of 3

Year Recorded: 1957

**BOUNTIFUL**

1400 North

ALTA HEIGHTS SUB PLAT A AMENDED & EXTENDED  
02-082  
522

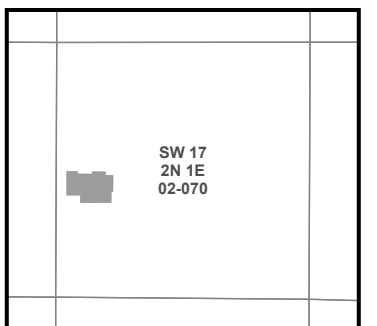
NORTH PARK SUBDIVISION PLAT C  
02-087  
296



**Parcel ID**

**Lot Number**

1 inch = 40 feet



SLB & M

NOTE: Distance, bearings and radius values are approximate. User needs to refer to the recorded legal descriptions for exact bearing and distances. For cadastral or technical information, see the dedicated plat and or legal descriptions in recorded documents.



# NORTH PARK SUBDIVISION PLAT B

**BOUNTIFUL**

ALTA HEIGHTS SUB PLAT A AMENDED & EXTENDED  
02-082  
522



Tax ID Prefix

**02-087**

Plat ID: 263

Sheet 2 of 3

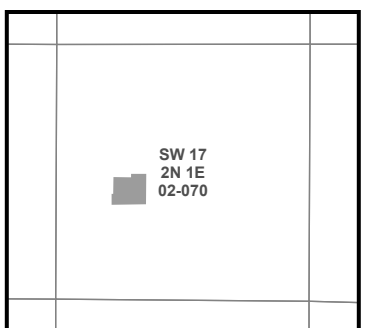
Year Recorded: 1957



**Parcel ID**

Lot Number

1 inch = 40 feet



S L B & M

NOTE: Distance, bearings and radius values are approximate. User needs to refer to the recorded legal descriptions for exact bearing and distances. For cadastral or technical information, see the dedicated plat and or legal descriptions in recorded documents.



# NORTH PARK SUBDIVISION PLAT C

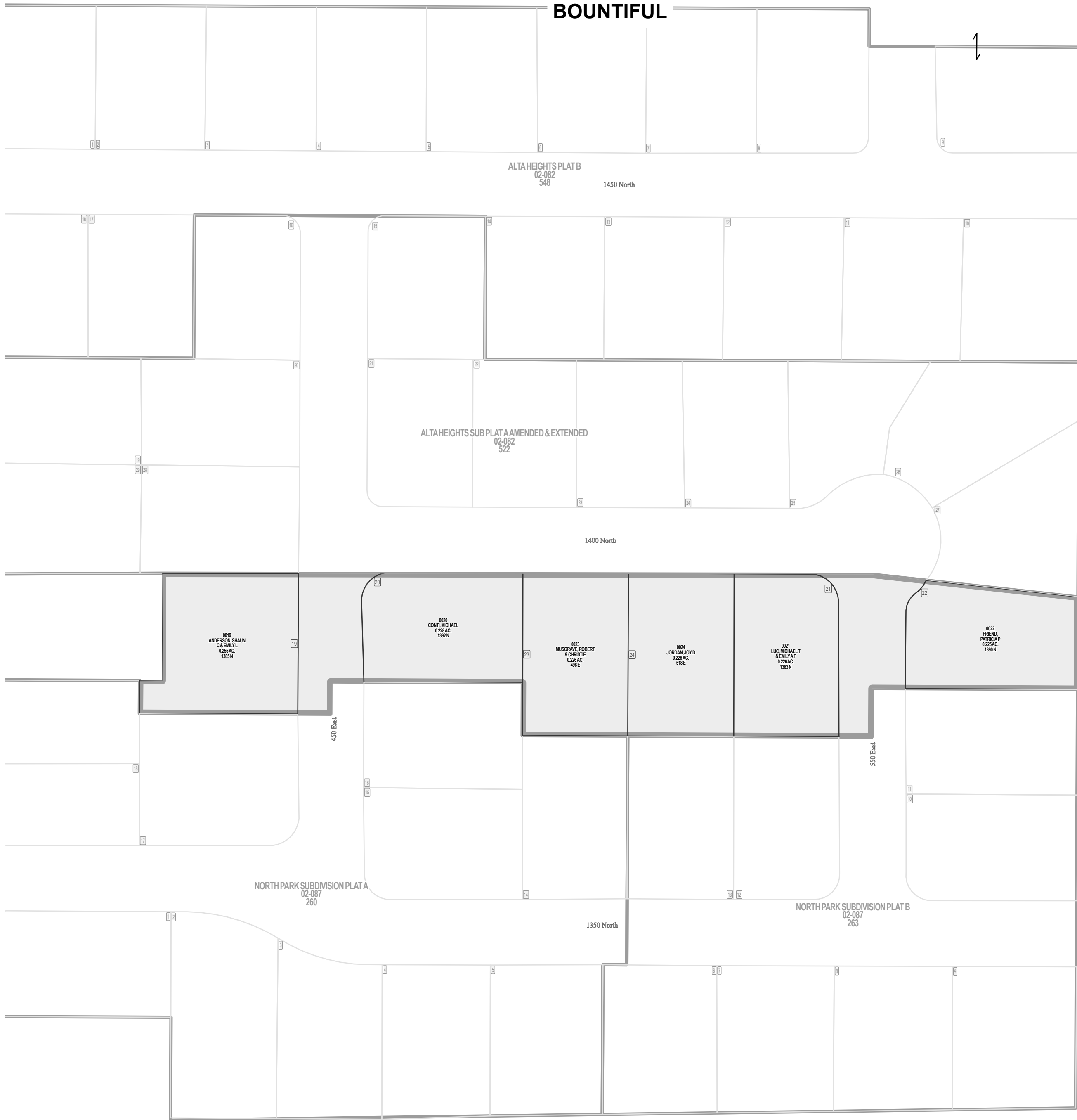
Tax ID Prefix

**02-087**

Plat ID: 296

Sheet 3 of 3

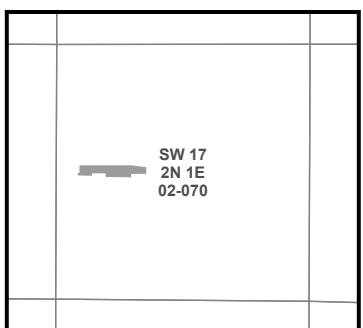
Year Recorded: 1958



**Parcel ID**

Lot Number

1 inch = 60 feet



S L B & M

NOTE: Distance, bearings and radius values are approximate. User needs to refer to the recorded legal descriptions for exact bearing and distances. For cadastral or technical information, see the dedicated plat and or legal descriptions in recorded documents.

