

HILLS NO. 1 SUBDIVISION, THE BOUNTIFUL

Tax ID Prefix

02-079

Plat ID: 819

Sheet 1 of 4

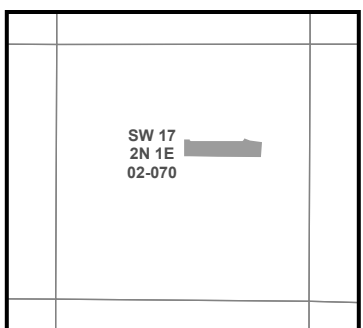
Year Recorded: 1974



Parcel ID

Lot Number

1 inch = 60 feet



NOTE: Distance, bearings and radius values are approximate. User needs to refer to the recorded legal descriptions for exact bearing and distances. For cadastral or technical information, see the dedicated plat and or legal descriptions in recorded documents.



HILLS NO. 2 SUBDIVISION, THE BOUNTIFUL

Tax ID Prefix

02-079

Plat ID: 871

Sheet 2 of 4

Year Recorded: 1975

Pages Lane 1000 S

E Pages Ln

ISLAND VIEW SUBDIVISION PLAT J
02-074
952

Island View Drive

ISLAND VIEW SUBDIVISION PLAT L AMENDED
02-116
1850



HILLS NO. 3 SUBDIVISION AMENDED, THE
02-079
919

HILLS NO. 1 SUBDIVISION, THE
02-079
819

FREESTONE ACRES PLAT A
02-088
370

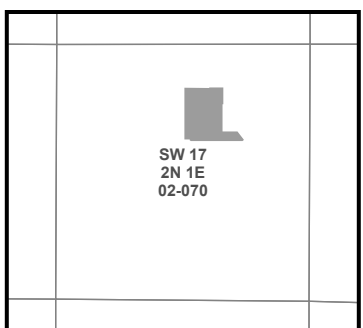
02-088
498



Parcel ID

Lot Number

1 inch = 60 feet



SLB & M

NOTE: Distance, bearings and radius values are approximate. User needs to refer to the recorded legal descriptions for exact bearing and distances. For cadastral or technical information, see the dedicated plat and or legal descriptions in recorded documents.



Last update: 6/6/2023

HILLS NO. 3 SUBDIVISION AMENDED, THE

BOUNTIFUL

Tax ID Prefix

02-079

Plat ID: 919

Sheet 3 of 4

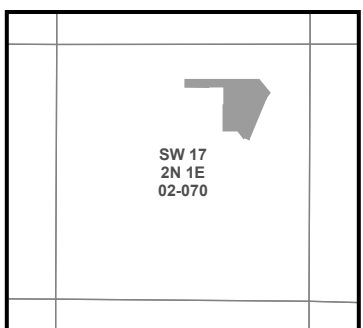
Year Recorded: 1975



Parcel ID

Lot Number

1 inch = 60 feet



SLB & M

NOTE: Distance, bearings and radius values are approximate. User needs to refer to the recorded legal descriptions for exact bearing and distances. For cadastral or technical information, see the dedicated plat and or legal descriptions in recorded documents.



Last update: 6/6/2023

HILLS NO. 4 SUBDIVISION, THE BOUNTIFUL

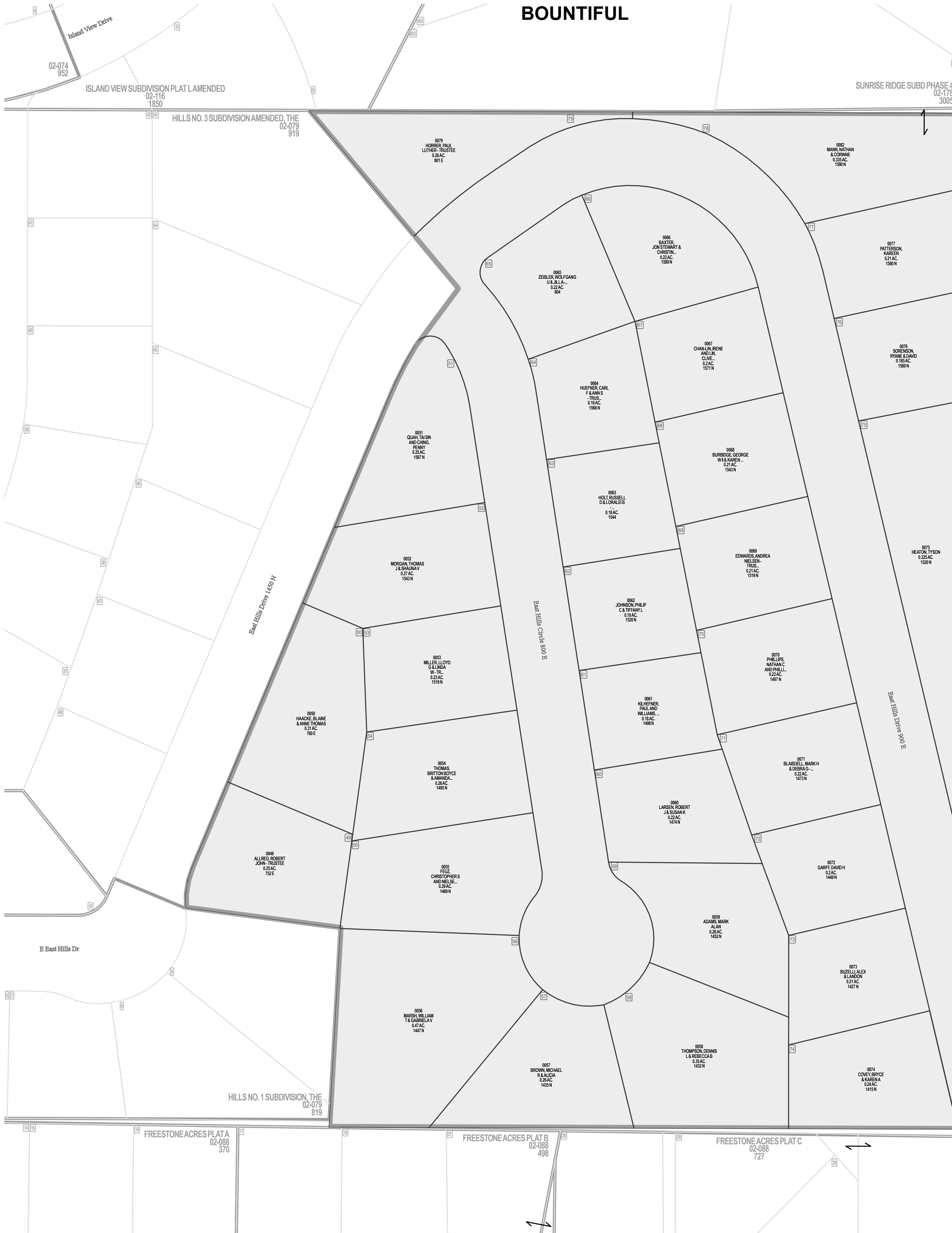
Tax ID Prefix

02-079

Plat ID: 936

Sheet 4 of 4

Year Recorded: 1976



Parcel ID

Lot Number

1 inch = 60 feet

NW 17 2N 1E 02-068	NE 17 2N 1E 02-069
SW 17 2N 1E 02-070	SE 17 2N 1E 02-071
NW 20 2N 1E 04-001	NE 20 2N 1E 04-002

SLB & M

NOTE: Distance, bearings and radius values are approximate. User needs to refer to the recorded legal descriptions for exact bearing and distances. For cadastral or technical information, see the dedicated plat and/or legal descriptions in recorded documents.

