

NW Quarter

Section 16

2N 1E

SLB & M

Tax ID Prefix

02 - 067

Sheet 1 of 4

02-051

02-060

02-060

08 09  
17 16

02-069

100°38'34"E 2864.02'

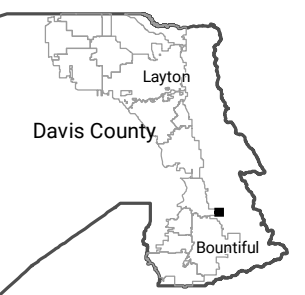
02-067-0001  
UNITED STATES  
OF AMERICA  
625.375 AC.

02-067

N



1 inch = 200 feet



NOTE: Distance, bearings and radius values are approximate. User needs to refer to the recorded legal descriptions for exact bearing and distances. For cadastral or technical information see the dedicated plat and/or legal descriptions in recorded documents.



Last update: 5/8/2020

02-071

02-067

02-067

**NE Quarter**

**Section 16**

**2N 1E**

SLB & M

Tax ID Prefix

**02 - 067**

Sheet 2 of 4

02-060

02-060

02-061

02-067

02-066

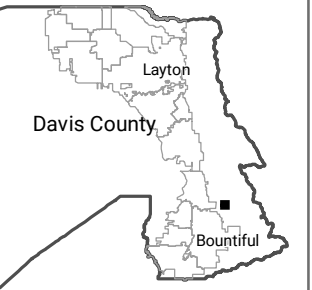
02-067

02-067

02-066



1 inch = 200 feet



NOTE: Distance, bearings and radius values are approximate. User needs to refer to the recorded legal descriptions for exact bearing and distances. For cadastral or technical information see the dedicated plat and or legal descriptions in recorded documents.



Last update: 5/8/2020

SE Quarter

Section 16

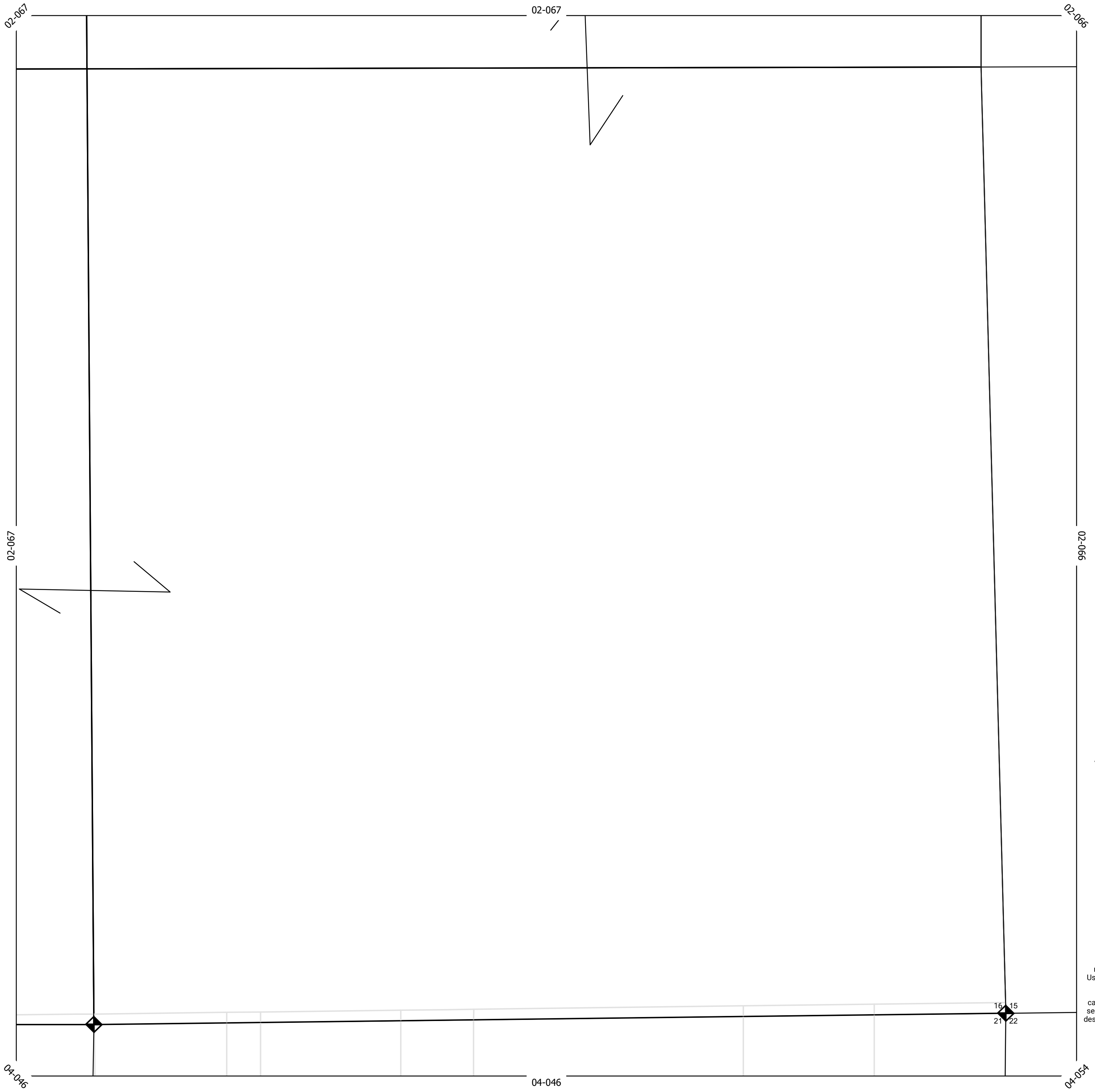
2N 1E

SLB & M

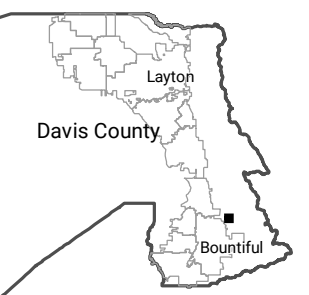
Tax ID Prefix

02 - 067

Sheet 3 of 4



1 inch = 200 feet



NOTE: Distance, bearings and radius values are approximate. User needs to refer to the recorded legal descriptions for exact bearing and distances. For cadastral or technical information see the dedicated plat and or legal descriptions in recorded documents.



Last update: 5/8/2020

SW Quarter

Section 16

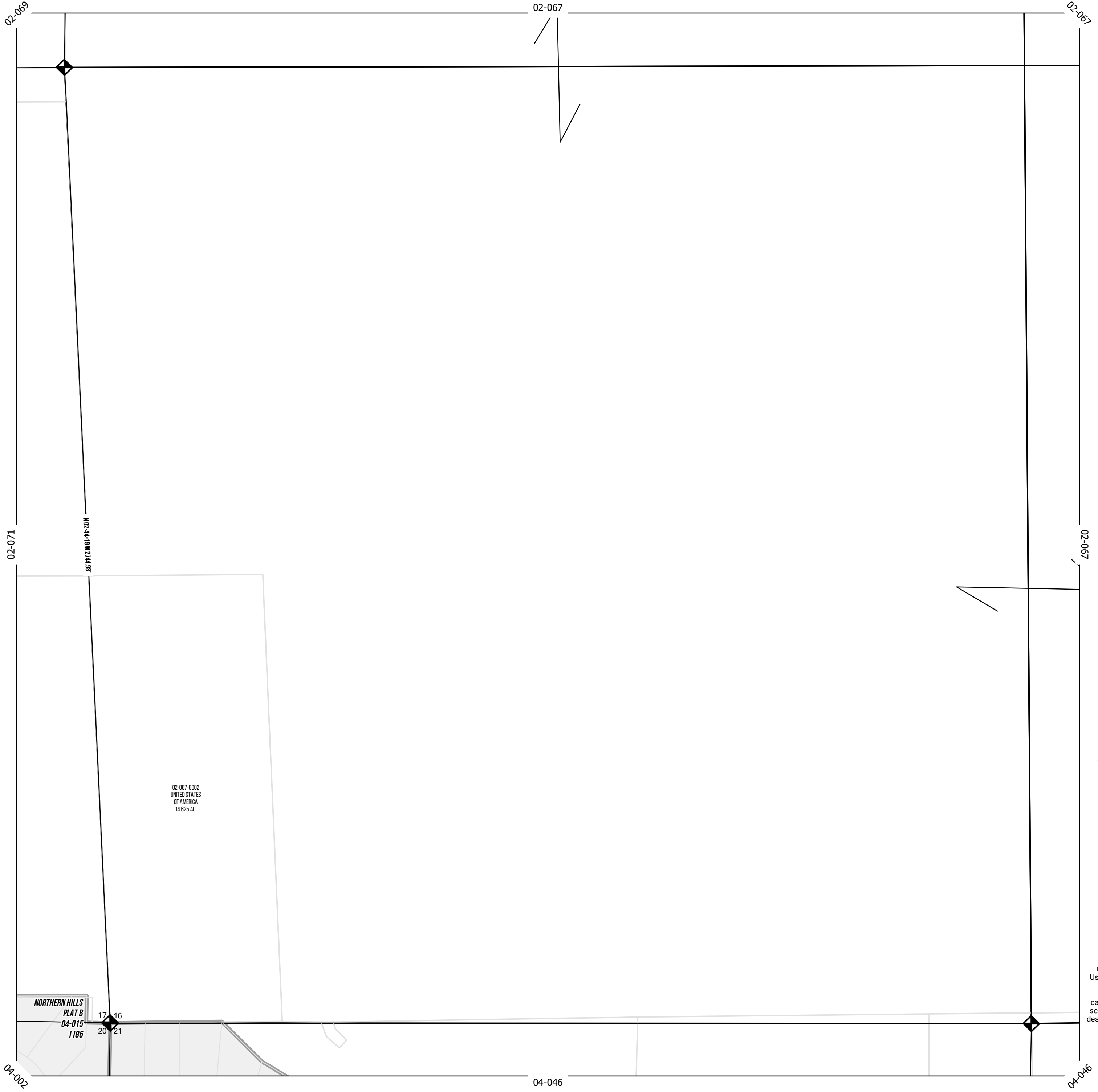
2N 1E

SLB & M

Tax ID Prefix

02 - 067

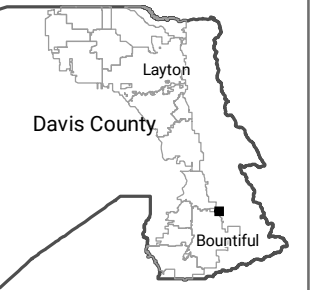
Sheet 4 of 4



N



1 inch = 200 feet



NOTE: Distance, bearings and radius values are approximate. User needs to refer to the recorded legal descriptions for exact bearing and distances. For cadastral or technical information see the dedicated plat and/or legal descriptions in recorded documents.



Last update: 5/8/2020